





Utility Arboriculture

Technical Services

Overview

Utility Arboriculture

- *Utility Pruning*
 - *ANSI Standards*
 - *Utility Arboriculture Best Practices*

Customer Relations

- *First Impressions*
- *Active Listening*
- *Frequently Asked Questions*
- *Handling Difficult Situations*

- *There is lots to talk about*
- *Ask questions and participate!*

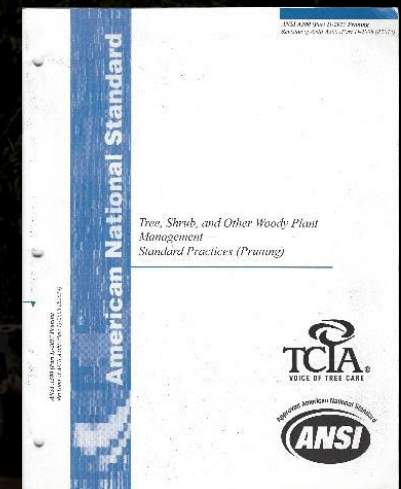
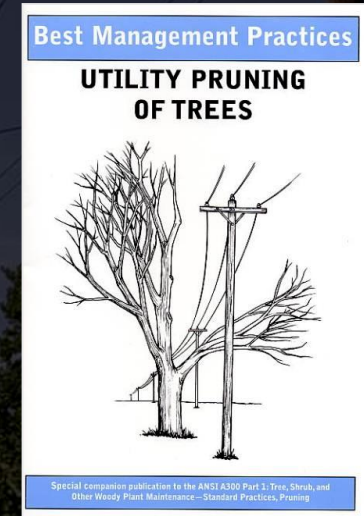
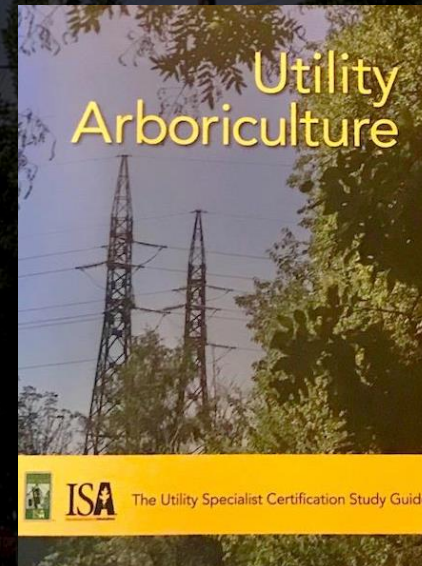
Technical Services

- Training, workshops and presentations
 - Best Practices
 - IVM
 - Utility Arboriculture
 - Public Relations
- Research and development projects
- Articles and white papers
- Industry involvement – ISA, TREE Fund, TCIA, ANSI, VM Associations
- New products, opportunities and trends
- Expert witness and consulting
- Environmental regulations and compliance

Background

Geoff Kempter

- 30 years in the business
- Author:
 - ISA Utility Pruning Best Practices
 - Utility Arboriculture, A Study Guide for the ISA Utility Specialist Exam
- 20 years on the ANSI A300 Committee



Is your work
important?



Utility arboriculture is a vital service

However...

- Many people don't understand what we do
 - *Value of utility arboriculture*
 - *Complexity of our work*



Are trees a good thing?

- Trees are a vital asset to our communities...

And...

Trees are a major threat to the safety and reliability of overhead utility service







Value of Utility Arboriculture

- Has your work prevented power outages?
 - Fires?
 - How much is that work worth?
 - To SDG&E?
 - To the communities, businesses and homeowners we serve?
- *Our service is greatly undervalued!*



Trees fail... With consequences!

Cost of power outages
in the US:

- **\$100 billion or more**
(U.S. Government)
- *At least half of this is
due to trees!*
- Many outages and
fires are prevented
by our work!

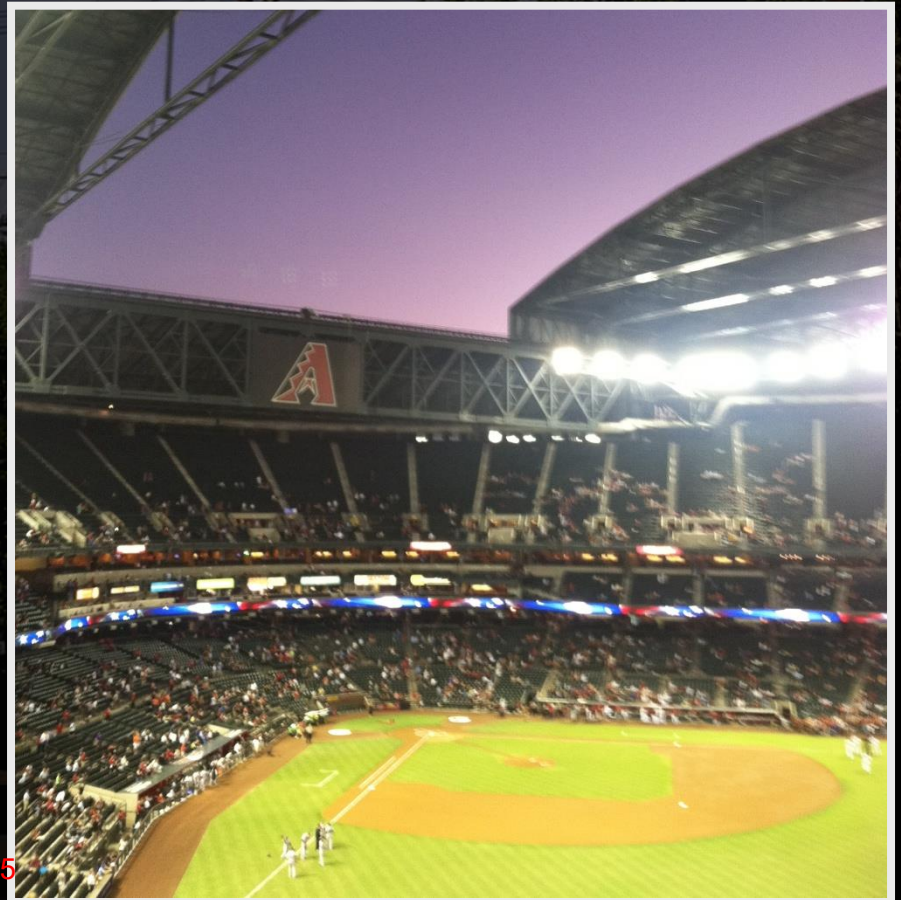


*Your work makes
modern life possible!*



Miami Herald

2020 WMP: WSD-SDGE-DR 2 Q65

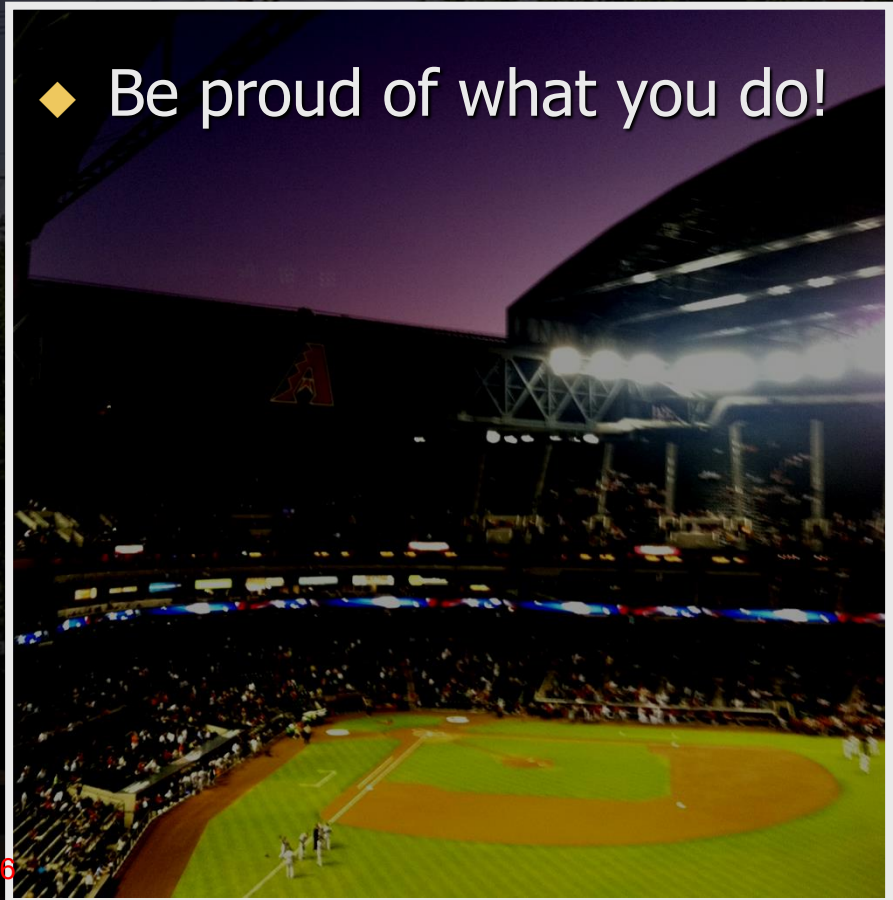


*Your work makes
modern life possible!*

2020 WMP: WSD-SDGE-DR 2 Q65



◆ Be proud of what you do!



Professional

- “A person who does a job that requires special training, education or skill...”
- “Someone with specialized experience or skill in a particular job or activity...”

➤ *Does this describe you?*

- *What do you expect from professionals who you deal with?*

What do you expect from Medical Professionals?

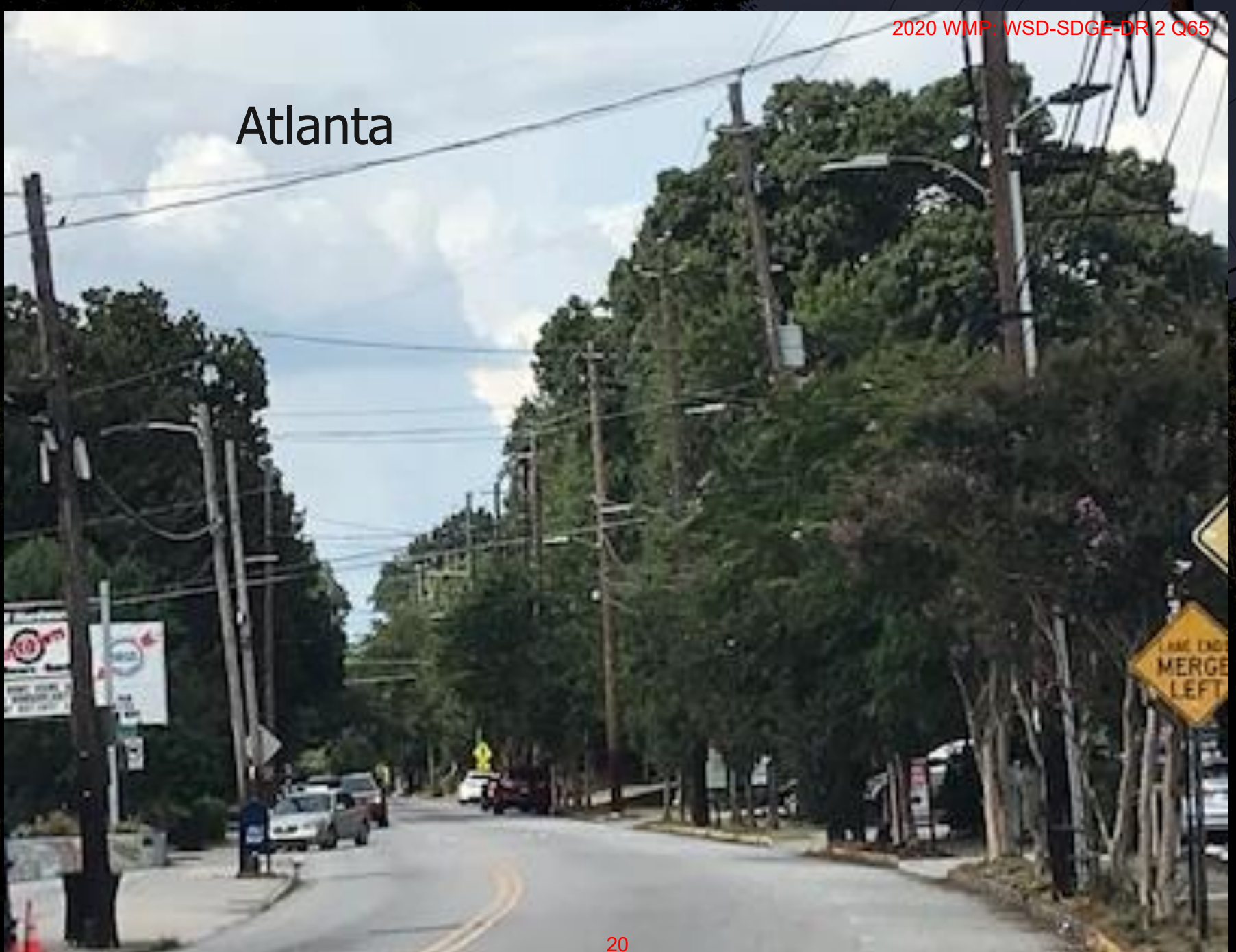
- Know what they are doing!
 - Knowledge and experience
- Communicate
 - Answer questions and explain
 - Be friendly
- Have integrity – no BS!
- Look the part
- There when you need them



You are Professionals

- Knowledge and Experience:
 - *You know this business, and you make good decisions.*
- Communication:
 - *Listen to customer. Be confident, show respect, make eye contact, and explain our work.*
- Integrity:
 - *Be honest and courteous. Follow up on your commitments – everybody's credibility is on the line!*
- Appearance:
 - *Look credible. People judge by what they see.*
- Attitude:
 - *None of this matters without a positive approach.*
- There when you are needed

Atlanta



El Cajon



Think like a tree

- Trees are alive
- Trees respond to their environment
- Trees respond to our treatments, e.g.
 - Pruning
 - Fertilization
 - Site changes
 - Herbicides
 - Etc

Sometimes plants behave badly...



But it's usually because we treated them poorly!

Trees are stuck where they are





Some trees grow REALLY FAST

Some trees are not what they appear to be



Trees compete for space

- With other trees...



And with our infrastructure

- Both above and below ground



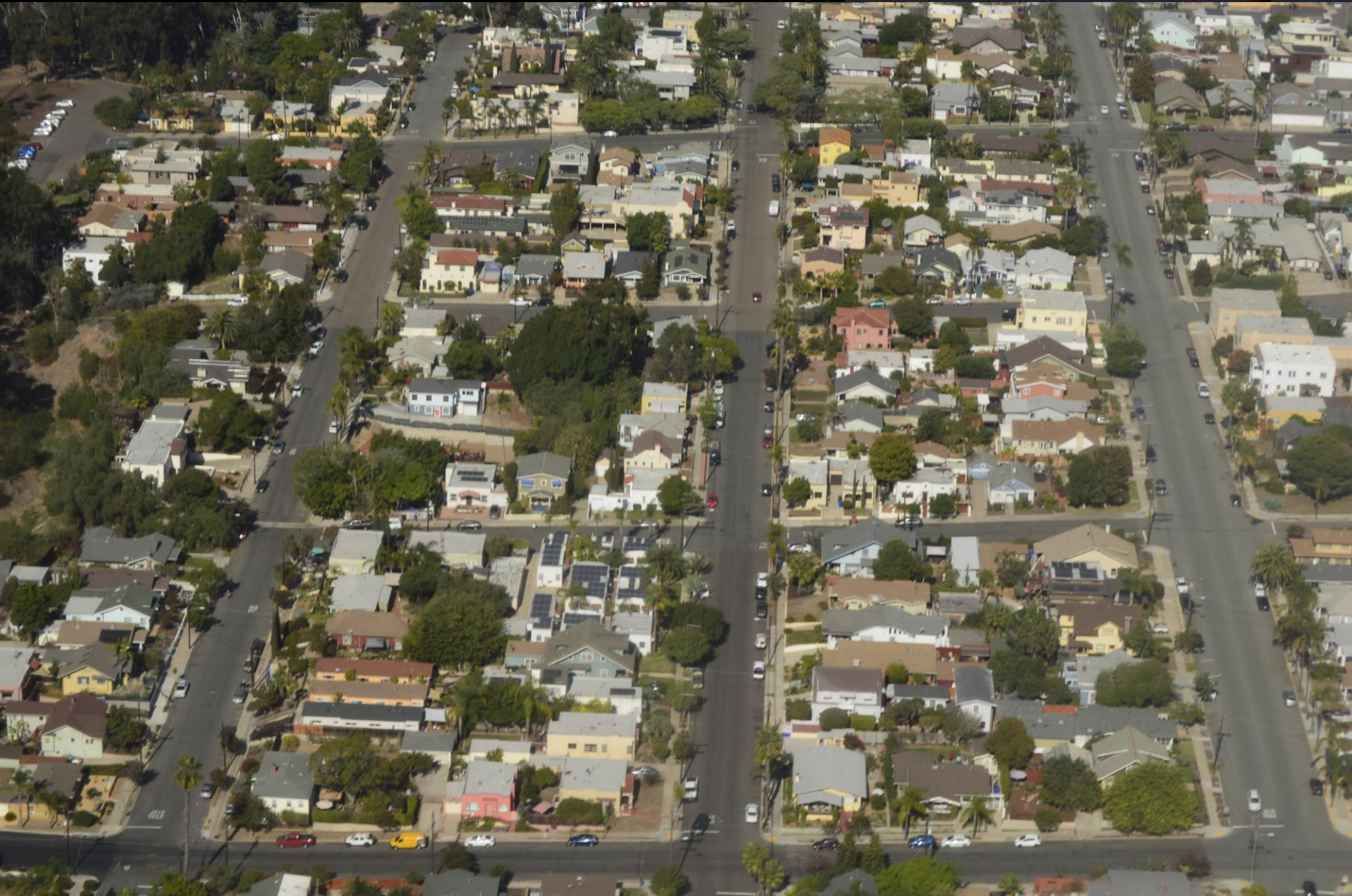


Trees are opportunistic















What does a cleared ROW represent to a tree?



Opportunity!

Opportunity!



If trees have access to light, soil and water...

- They will take advantage of that opportunity!
- Power line or not!



Trees respond predictably to certain treatments:





Poor
practice
yields
poor
results

Parts of a tree

Trunk and Branches

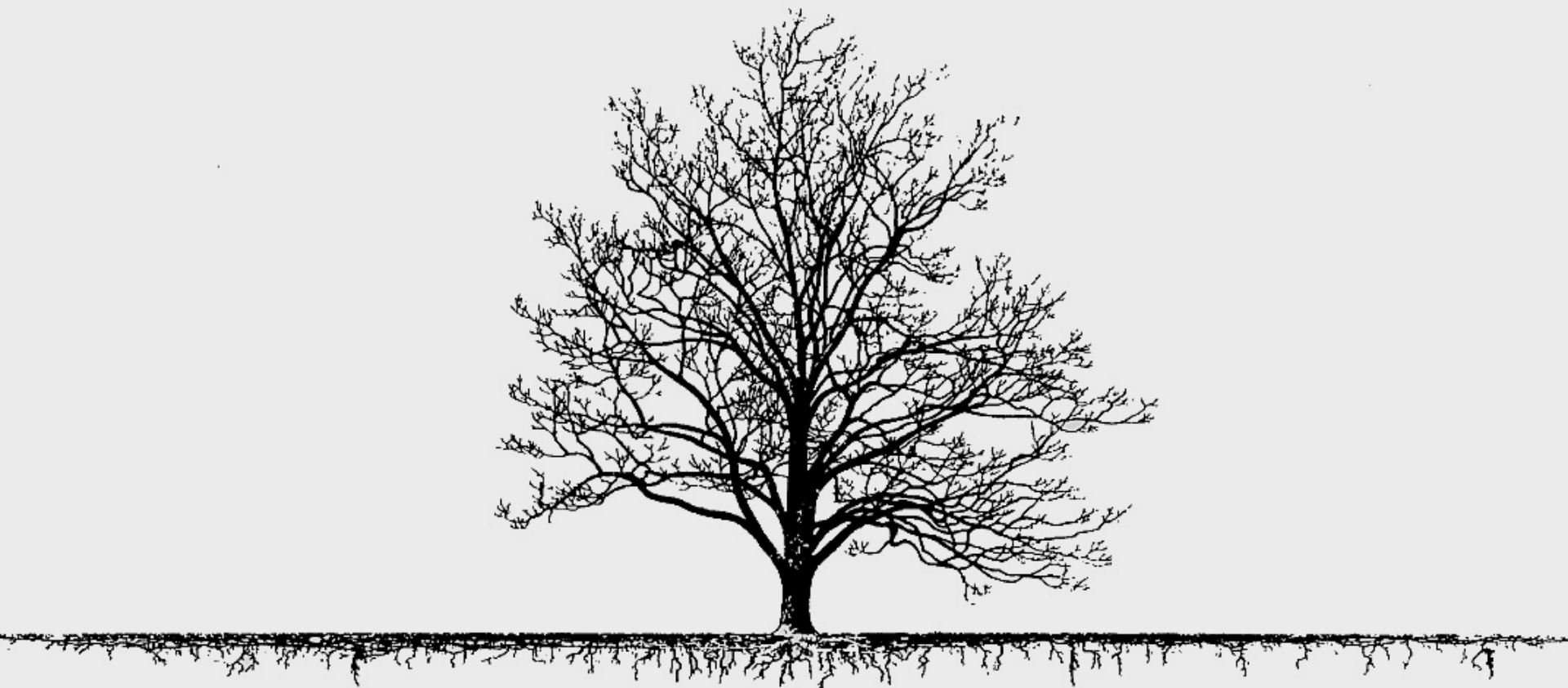
Basic functions:

- Support the tree
- Circulatory system:
 - *Transport water and nutrients*
- Access to light



Roots

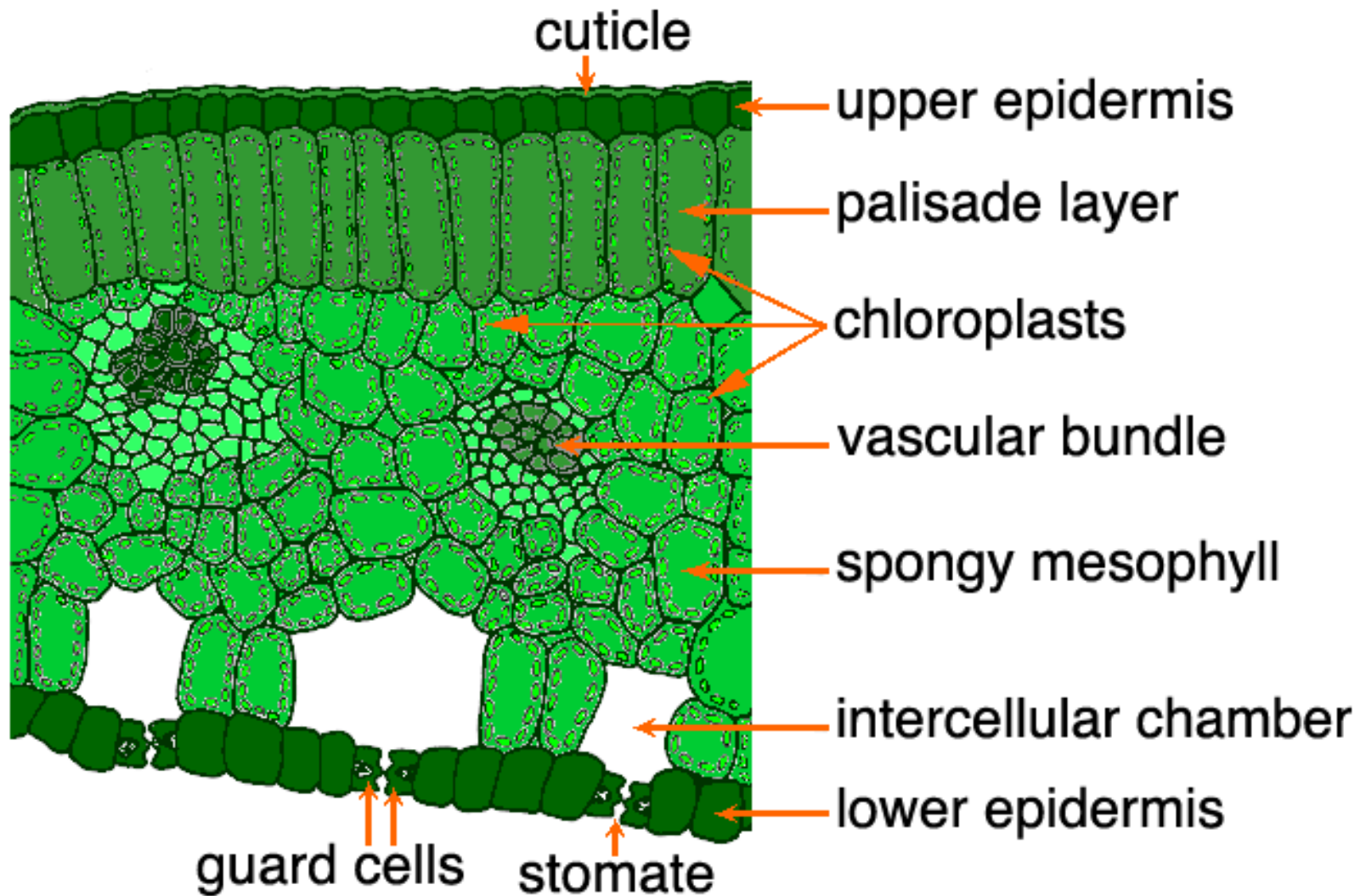
- Anchor the tree
- Absorb and transport water, essential minerals and nutrients
- Storage





Leaves

Leaves make **food** using
chlorophyll



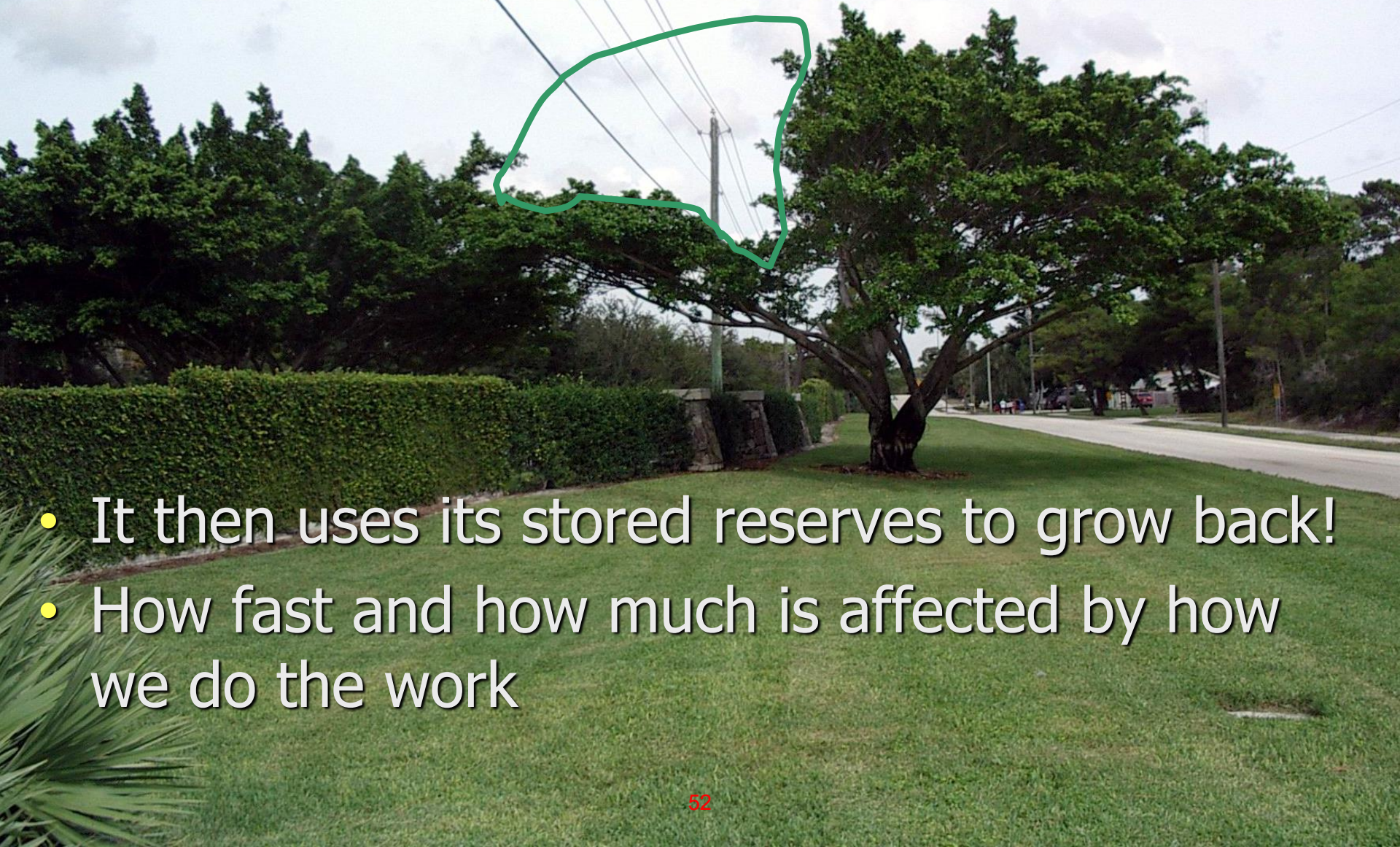
Simple Leaves



Compound Leaves



When we prune for clearance, we remove part of the tree's ability to make food...



- It then uses its stored reserves to grow back!
- How fast and how much is affected by how we do the work

- Tree shape and growth rates are controlled by their environment, and chemicals produced in the terminal buds at the ends of branches.



If all the buds are removed, the tree grows back rapidly, with poor form



If all the buds are removed, the tree grows back rapidly, with poor form





Cutting to laterals using directional pruning preserves buds and reduces unwanted growth



- Trees are opportunists
 - They take advantage whenever they can!
- Trees are complex living organisms
 - Trees make their own food!
- Trees respond to their environment and our treatments
- Applying what we know improves results
 - Know your trees!



ANSI Standards



American National Standards Institute

Our training and operations comply with applicable ANSI Standards

What are ANSI Standards?



- ANSI Standards are not created by government
- ANSI Z133 SAFETY and ANSI A300 TREE CARE standards are created *by arborists for arborists*

ANSI Standards for Utility Arborists

Z133 *Safety*

- Since 1972
- Provides safety rules for tree work
- Applies to *employers and employees*
- Uses:
 - To create safety training programs
 - By government to create safety regulations

A300 *Tree Care*

- Since 1995
- Defines standard practices for tree care
- Applies to *persons practicing arboriculture, including utilities*
- Uses:
 - Specifications, training programs and regulations as appropriate

Bottom line: Whatever you do, do it safely!

Bottom line: Whatever you do, do it right!

ANSI A300 Participants

- **Tree Industry Groups**, including
 - Tree Care Industry Association (TCIA)
 - International Society of Arboriculture (ISA)
 - American Society of Consulting Arborists (ASCA)
 - Society of Municipal Arborists (SMA)
 - Utility Arborist Association (UAA)
- **Companies**, including
 - Asplundh
 - Davey
 - Bartlett
- **U.S. Government Agencies**, including
 - The National Park Service
 - USDA Forest Service
- And more!



*Professional practice,
including proper utility
pruning is endorsed and
expected by everyone!*



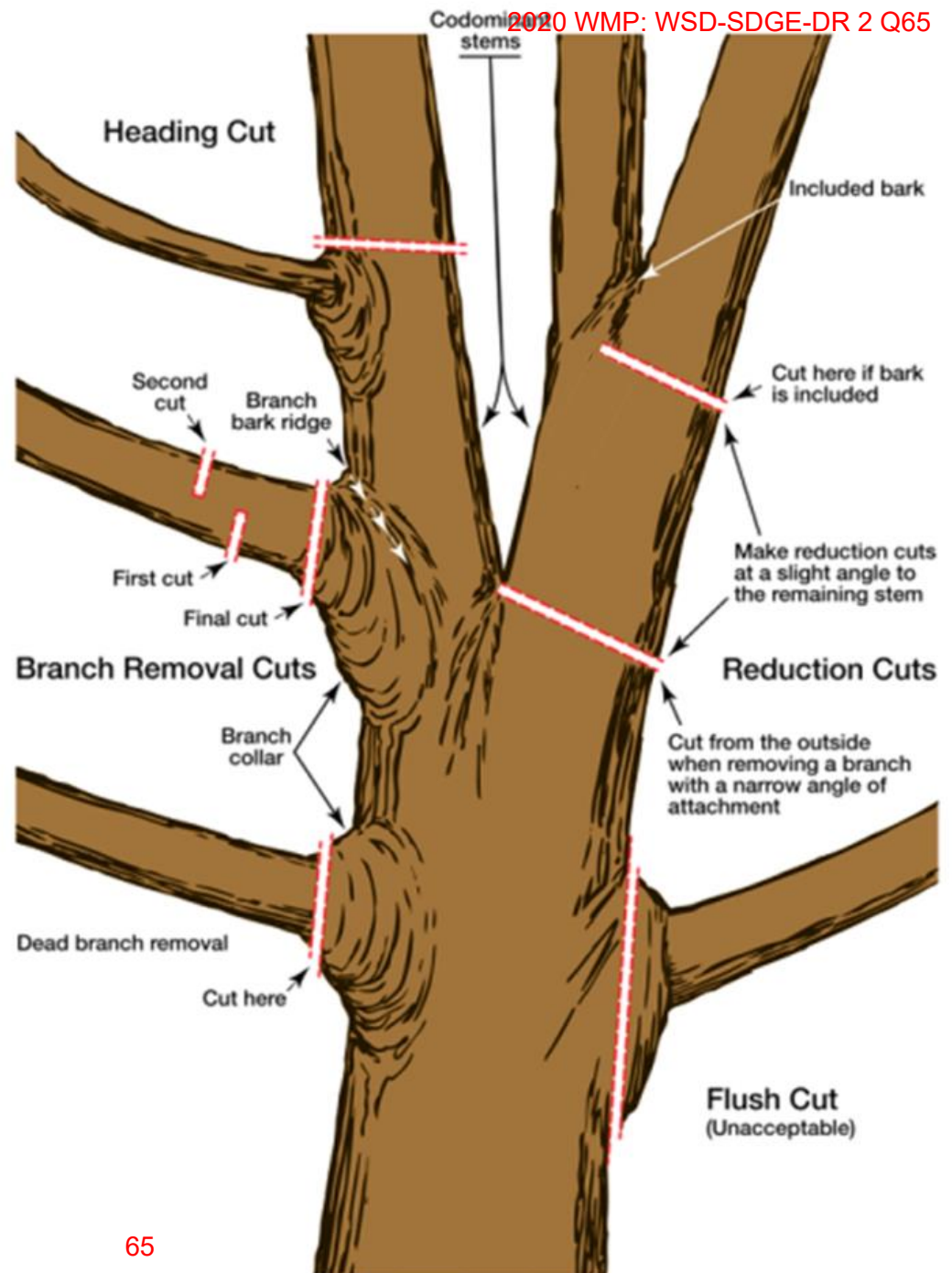
➤ A300 Standards apply to all professional tree care, including utility arboriculture

➤ *Industry standards don't always match homeowner expectations!*



Pruning cuts

- Branch removal
- Reduction
- Heading
- Shearing

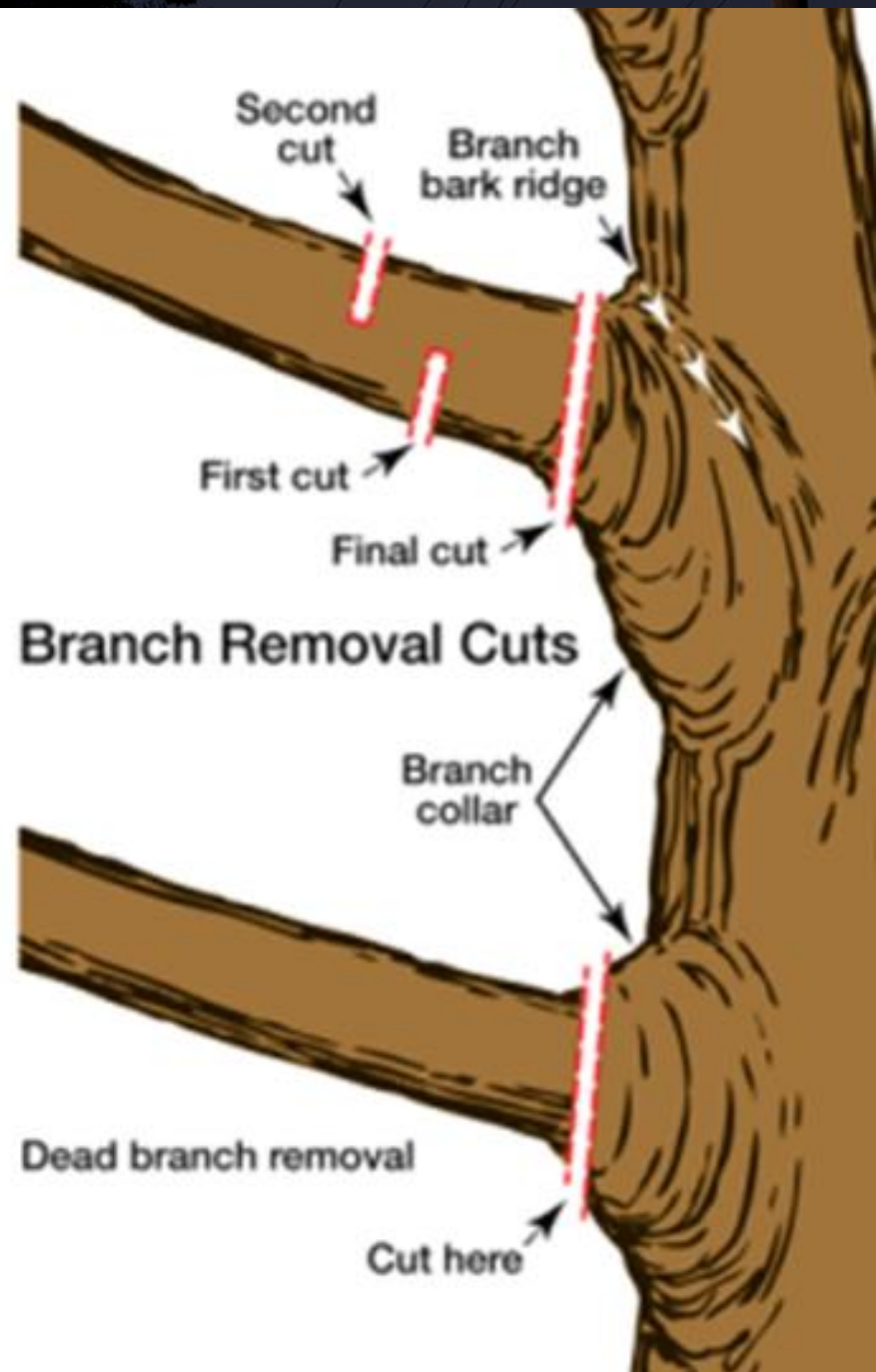


Pruning

Branch Removal Cut

Removes the smaller of two branches at a union or a parent stem, without cutting into the branch bark ridge or branch collar, or leaving a stub.

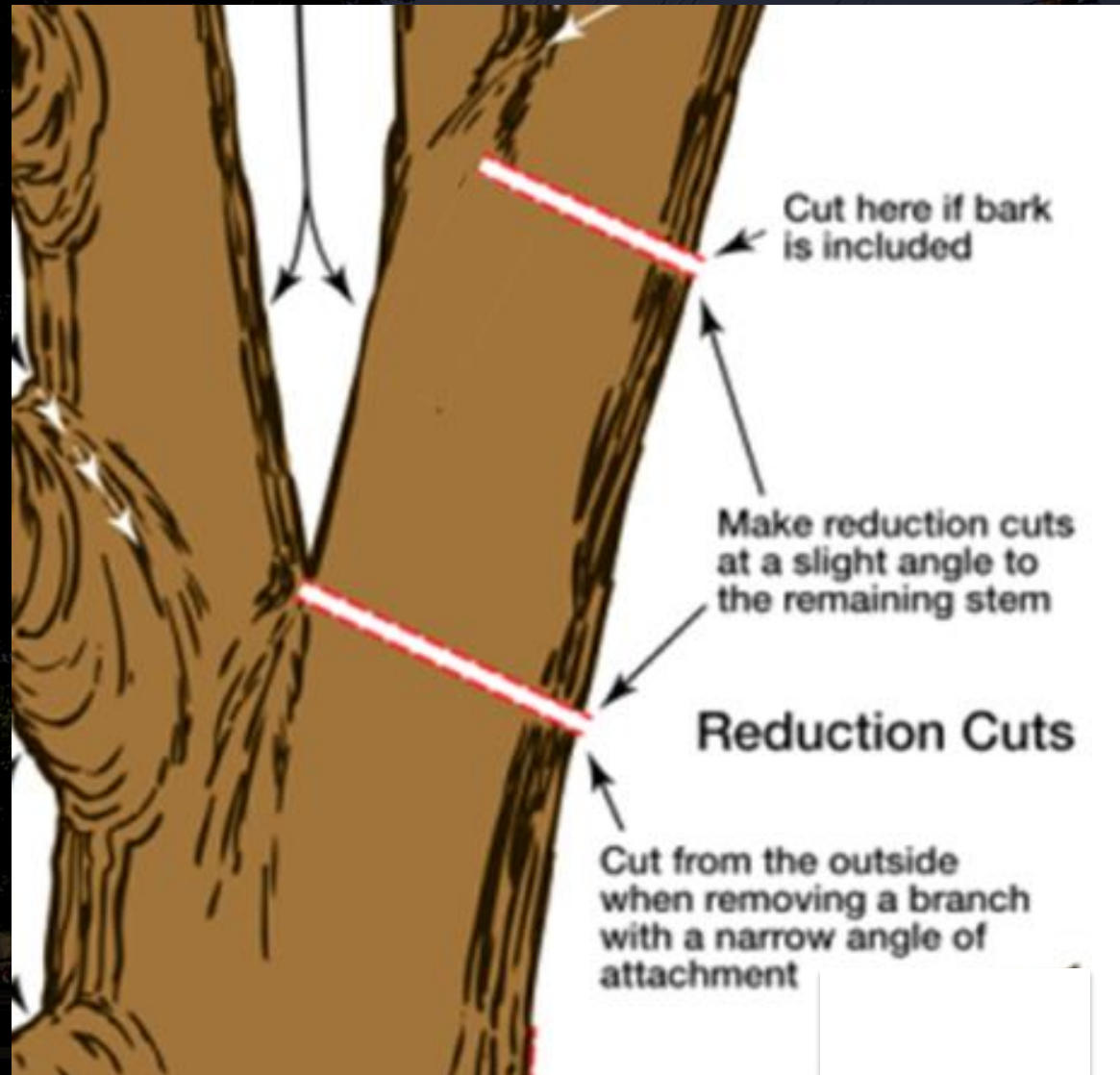
Precut large branches



Pruning

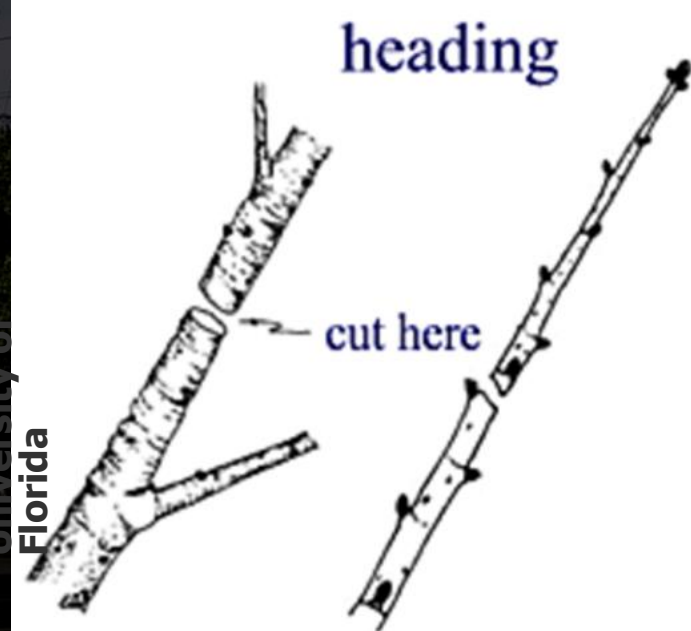
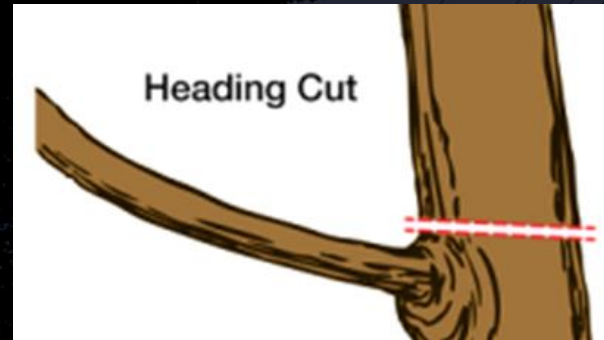
Reduction Cut

Removes the larger of two or more branches or stems, or one or more codominant stem(s), to a live lateral branch, typically at least one-third the diameter of the stem or branch being removed.



Pruning Heading cut

Removes a branch or stem between nodes (leaving a stub), to a bud, or to a live branch typically less than one-third the diameter of the branch or stem being removed.

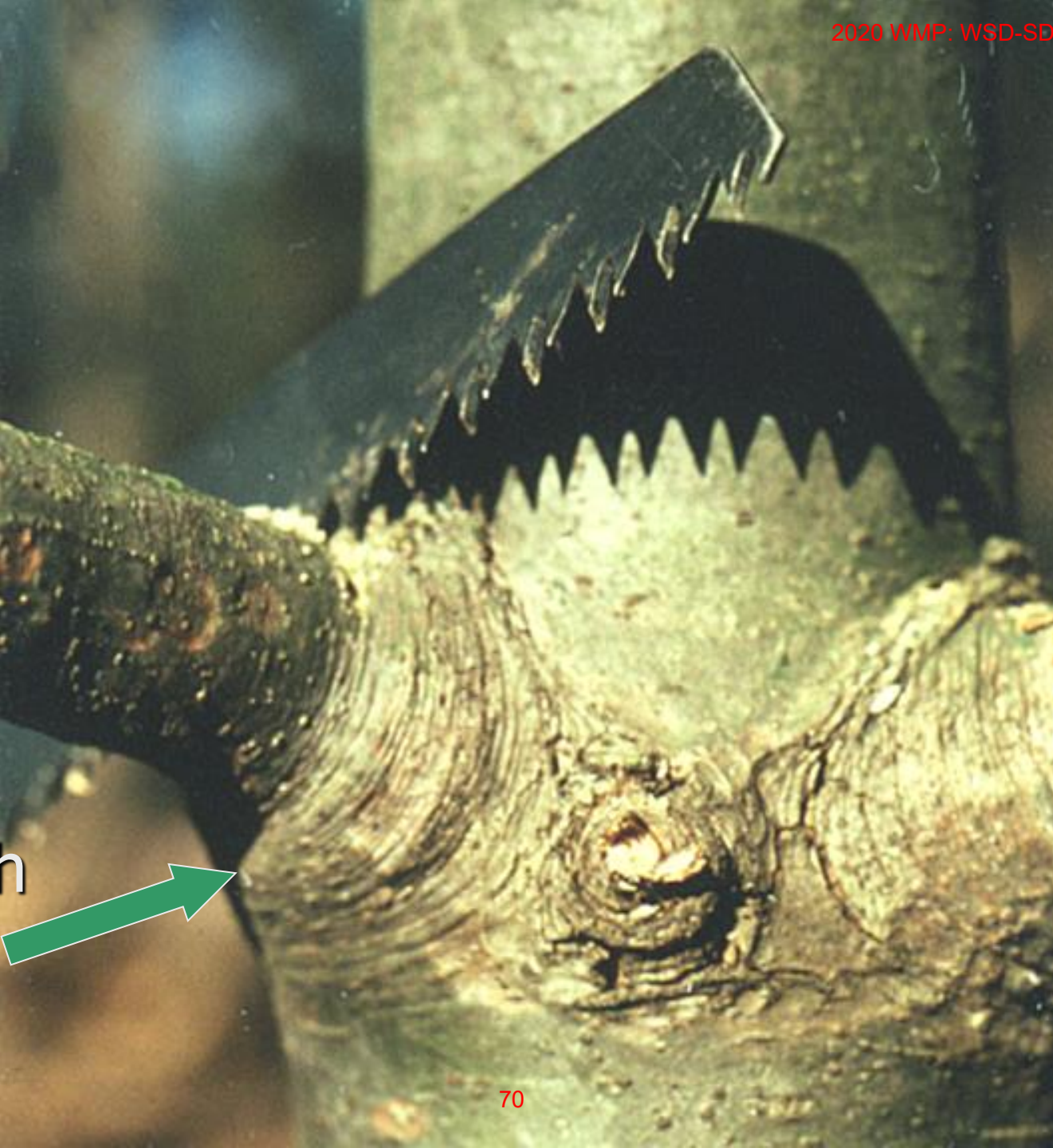


A300 on Utility Pruning

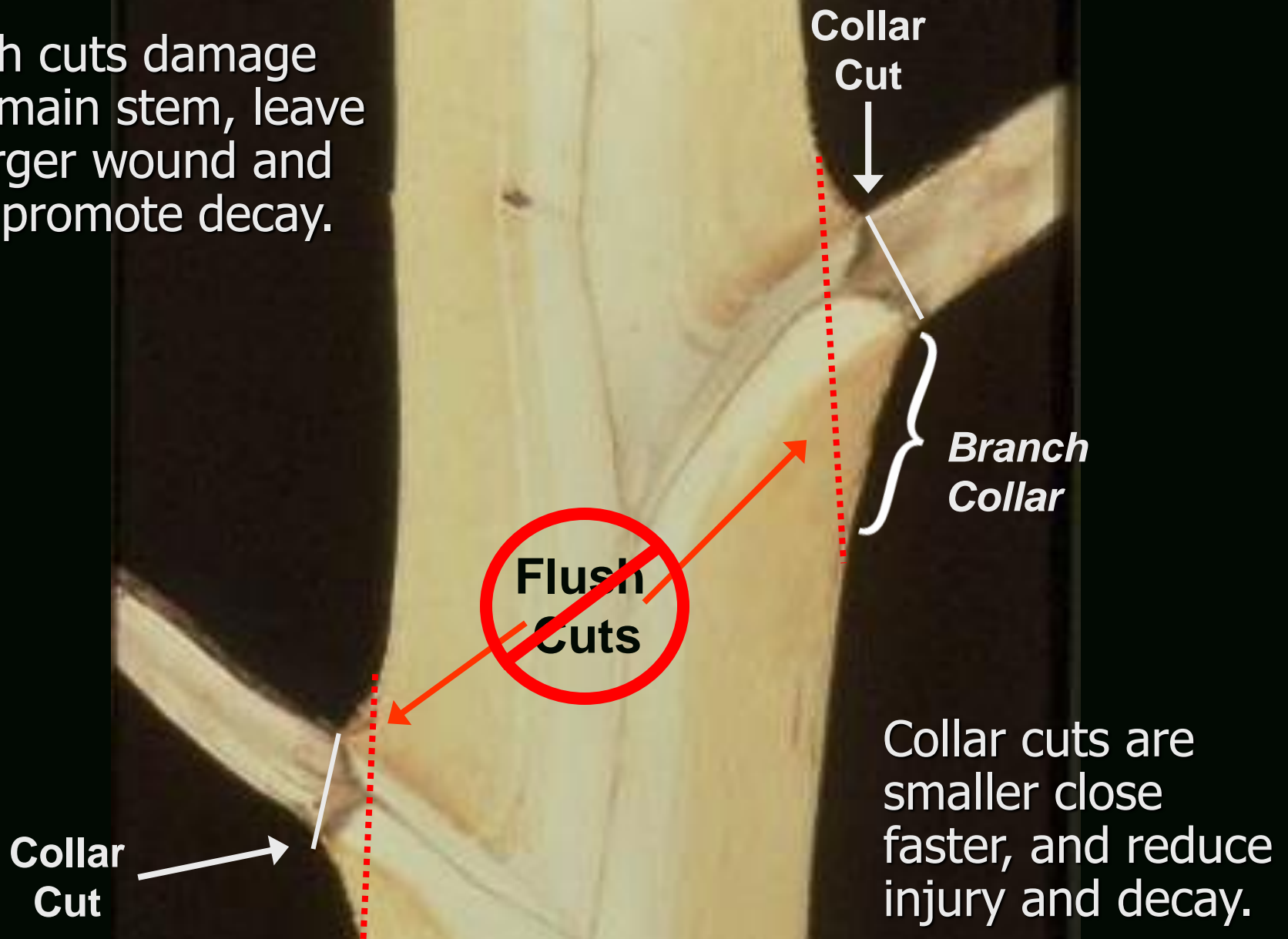
- Directional pruning:
 - Remove branches growing toward power lines
 - Reduce to laterals
- No stubs
- Don't damage the branch collar
- Prune trees by species
 - More clearance for fast growers



Branch
collar



Flush cuts damage the main stem, leave a larger wound and can promote decay.





Branch Bark Ridge

Collar Cuts

Dead Branch/Stub Removal

Cut outside the collar of living tissue

Cut Here

Not here

Not here



Each tree is different

Trees vary:

- Species
- Condition
- Growth rate
- Growth habit
 - Size, form, etc
- Reaction to pruning
- Wood strength
- Likelihood of failure



Take these into account on every tree
Know your trees!

Has anyone ever complained about the work you do?

- Gripes?
- Grumbles?
- Threats?







What happened to
this tree?

Why did it grow
that way?

What is holding it
up?

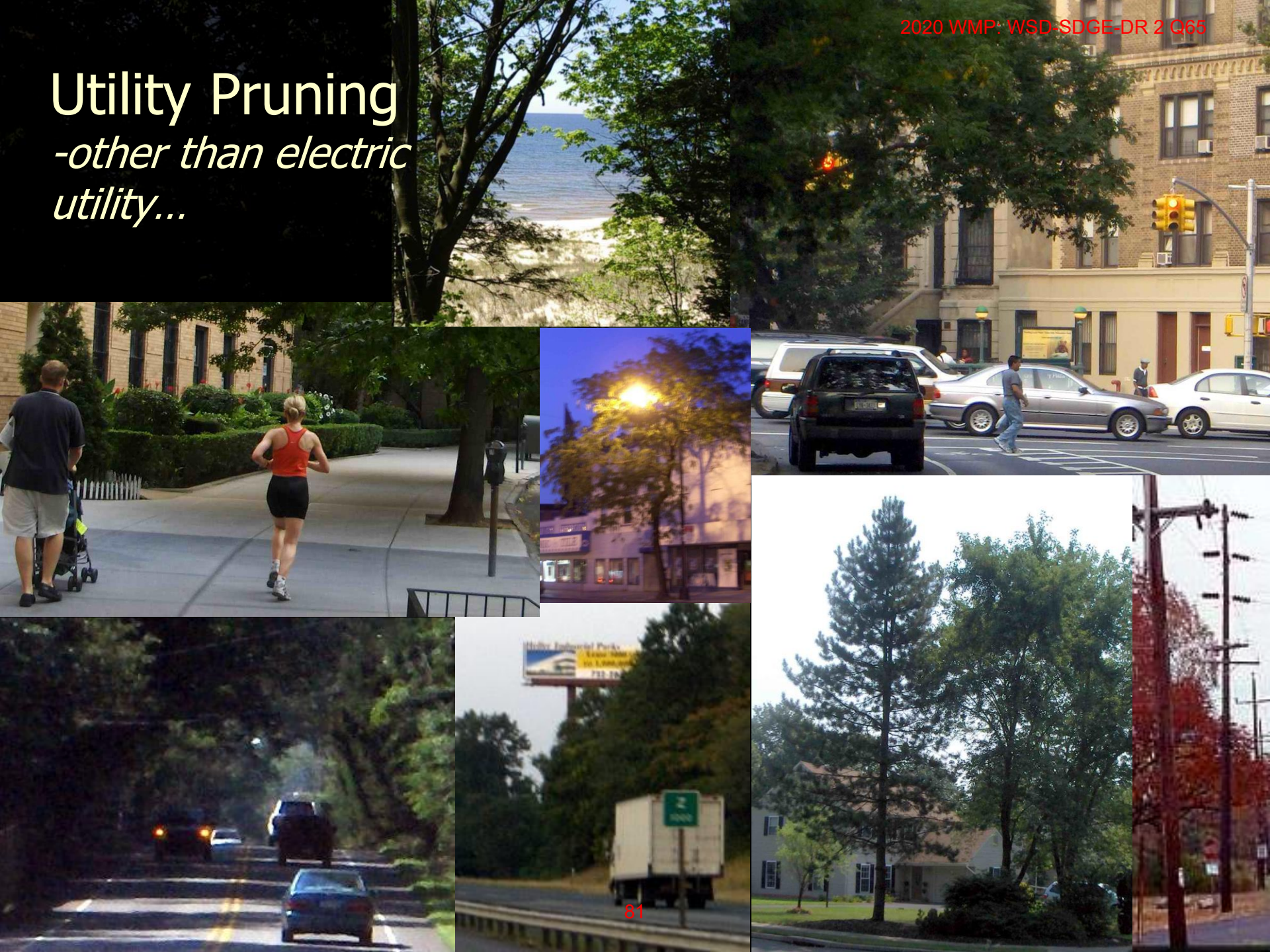




- Every tree is different
- Furthermore...
 - *Many arborists do utility-style pruning and nobody complains...*

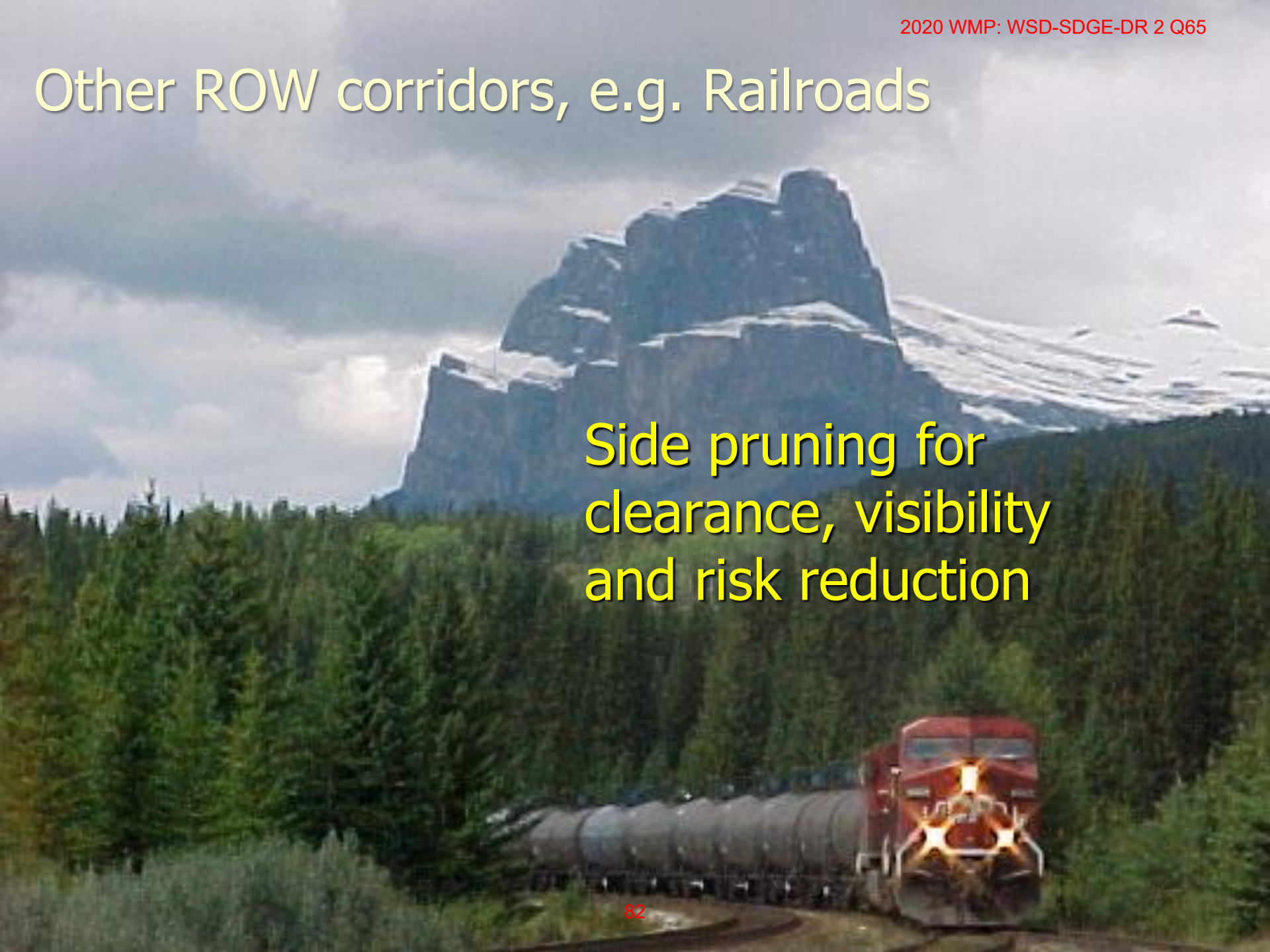
Utility Pruning *-other than electric utility...*

2020 WMP: WSD-SDGE-DR 2 Q65

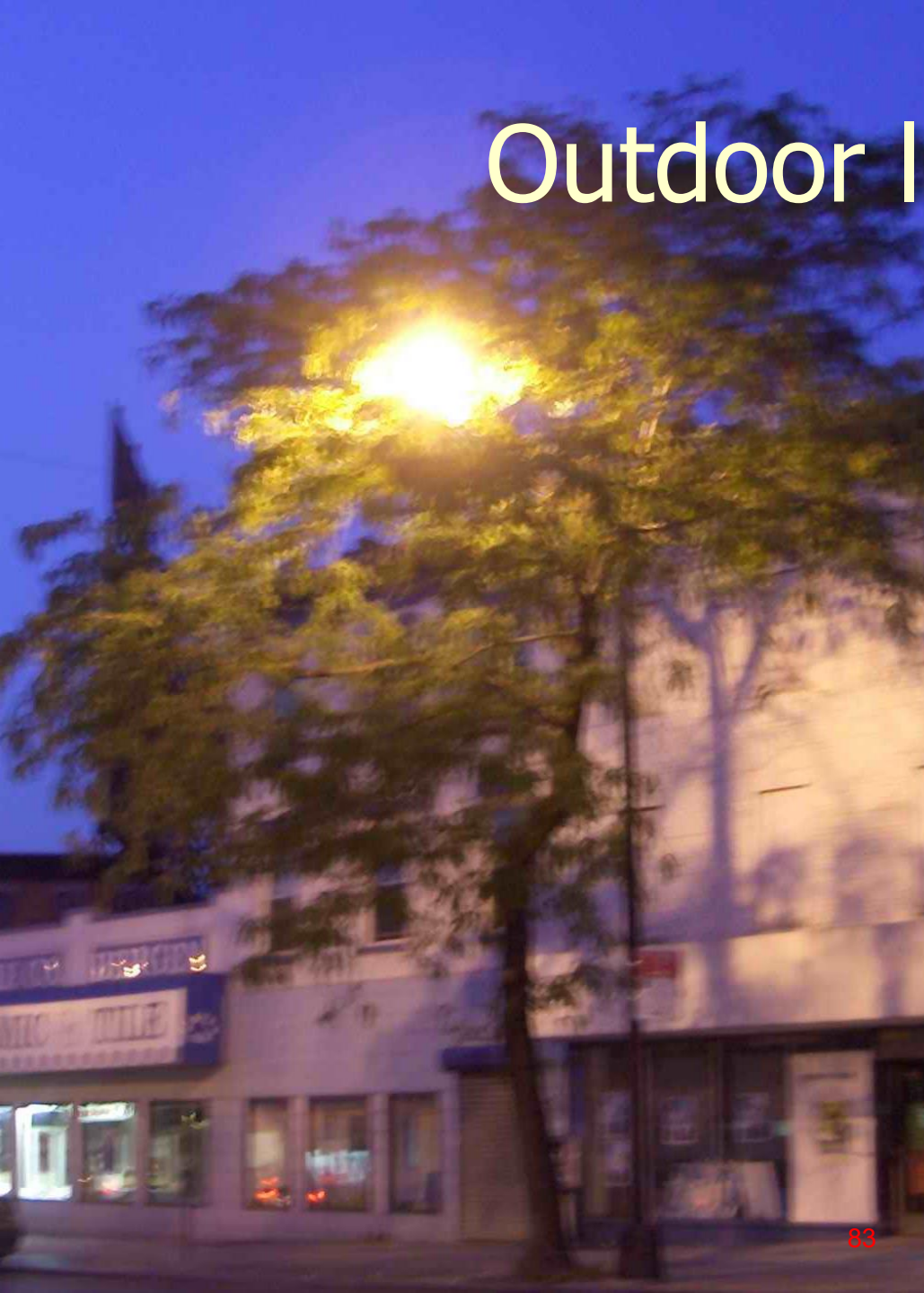


Other ROW corridors, e.g. Railroads

Side pruning for
clearance, visibility
and risk reduction



Outdoor lighting



Reduction pruning
Under-clearance
Safety

Buildings

Side pruning for
clearance

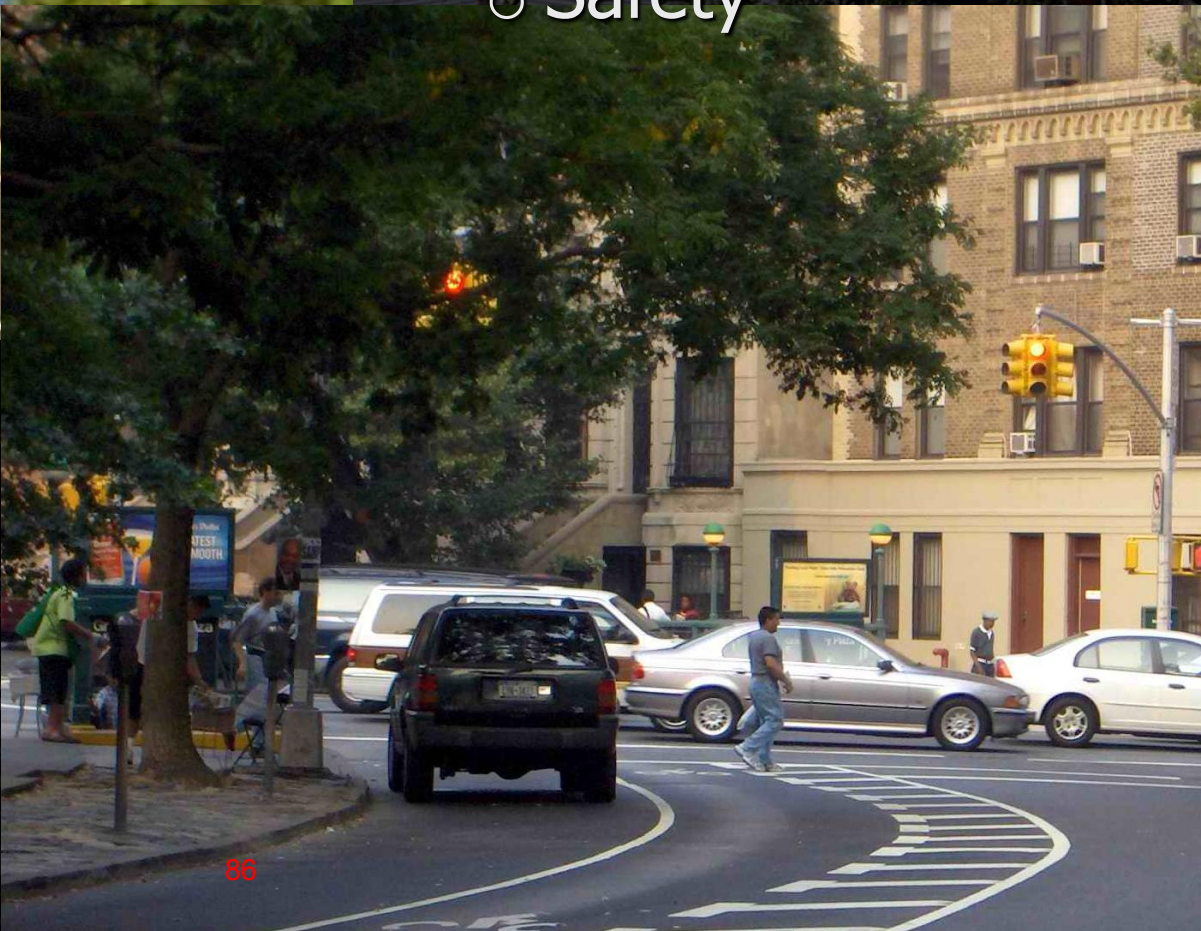
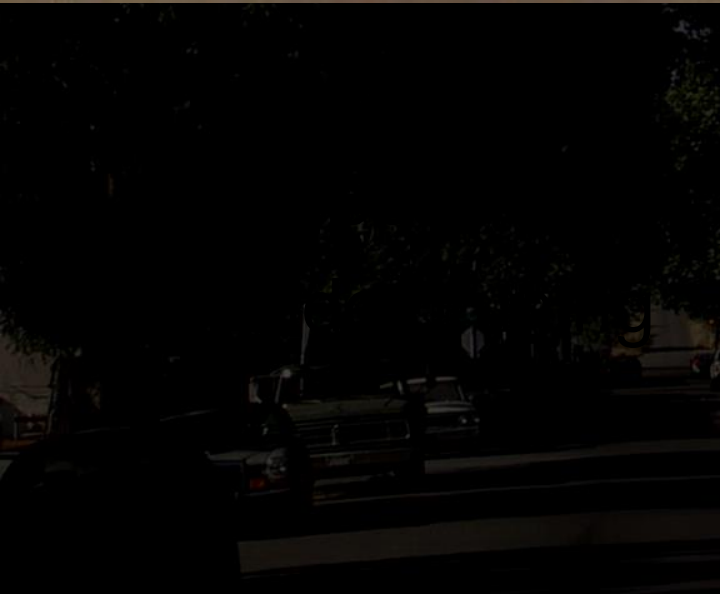
Ground-to-sky

Risk reduction

Bu

Critical lines of sight

- Traffic signs
- Signals
- Pedestrians
- Safety



Views

- Through pruning
- Directional pruning
- Reduction pruning
- Selective removal

Walkways

Under-clearance
Reduction
Side pruning
Safety



Vehicular clearance

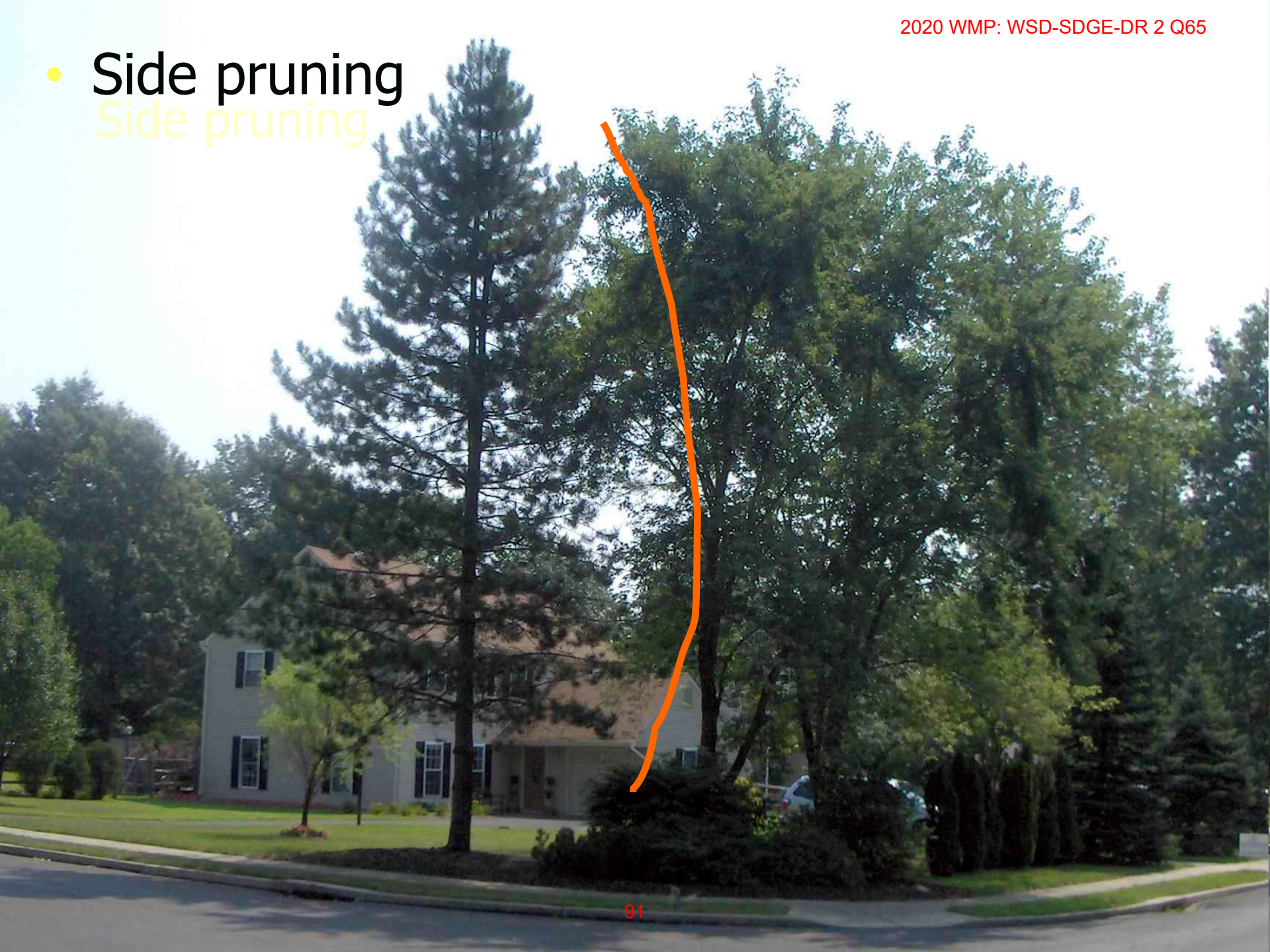
- Under-clearance
- Directional pruning
- Side pruning
- Risk reduction



Landscape:
Pruning to
reduce
competition



- Side pruning
Side pruning



Billboards

- Billboard owners get criticized for pruning trees.
- Is our work more important than billboard pruning?



Utility-style pruning is performed in many locations, with few complaints!

Because the reasons are clear!

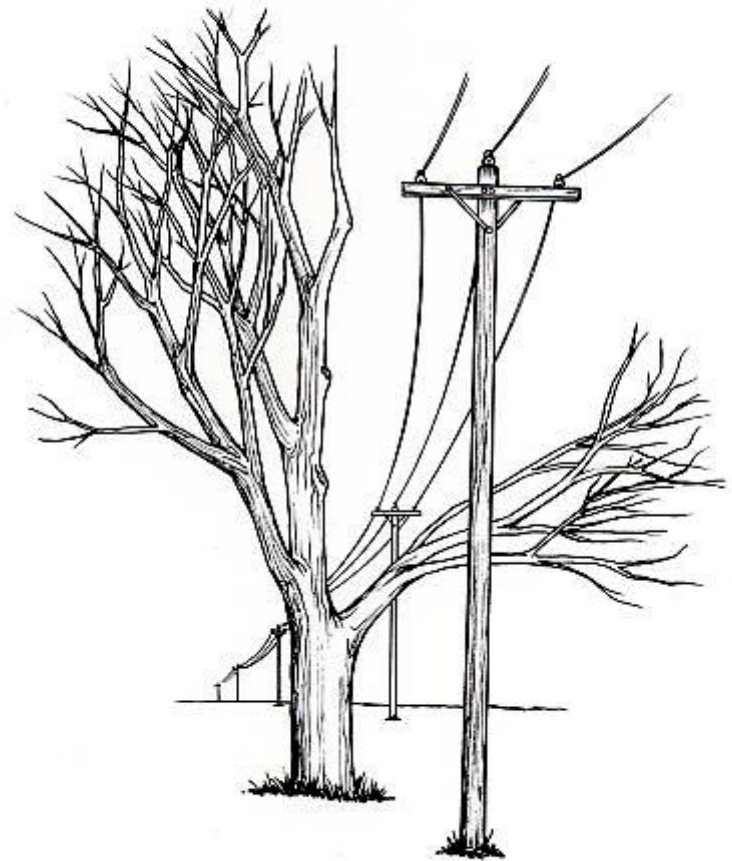
Better communication with customers will improve perception and acceptance of our work.



Best Practices

Best Management Practices

UTILITY PRUNING OF TREES



Special companion publication to the ANSI A300 Part 1: Tree, Shrub, and Other Woody Plant Maintenance—Standard Practices, Pruning



Best Practices

Learn from the mistakes of others!

Why Best Practices?

Why Best Practices? Professional Practice

- Our work is on display for all to see
- Ethical responsibility
 - ***Lives are at stake***
 - ***Reputations are on the line!***
 - *Getting it right is part of the job.*



Why Best Practices?

Effectiveness

- Using best practices yields better results
- Poor practice yields poor results
 - Excessive sprouting
 - Higher workload
 - Decay
 - Tree failures
 - ***Increased Risk!***



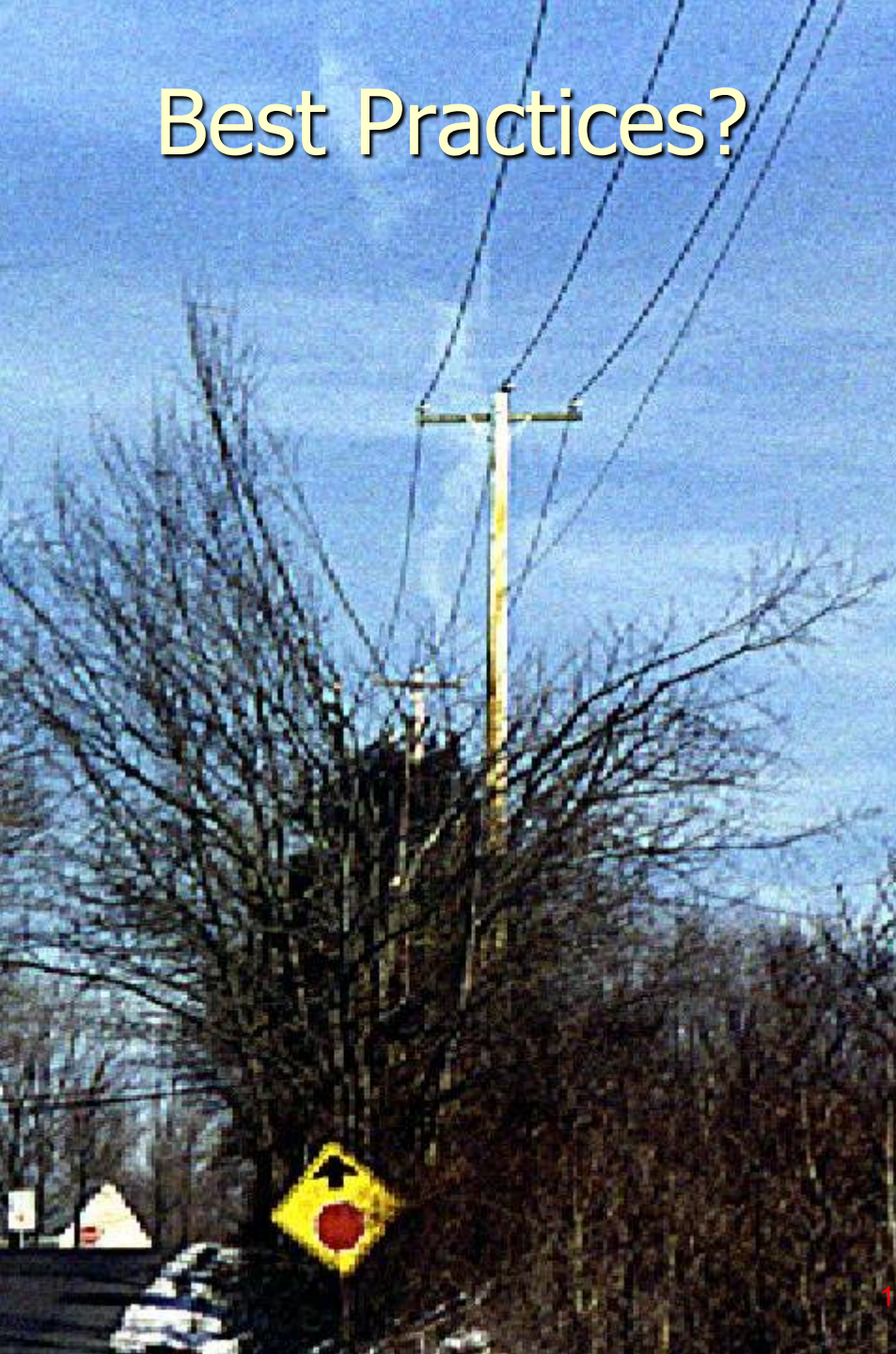
Why Best Practices?

Poorly managed trees pose risk to people, property and critical infrastructure



Best Practices?

Sez WHO?



Best Practices

Must be **Practical...**

...In achieving goals and objectives, e.g.

- High level of safety awareness and performance
- Electric service reliability
- Positive public perception
- High customer satisfaction

Mechanized Rural ROW Pruning

A best practice?

- ✓ Better safety performance
 - ✓ Clearance
 - ✓ Reduced cost
 - ✗ Quality of tree care
 - ✗ Customer complaints
 - ? Improved reliability
- *Don't run it down Main Street!*

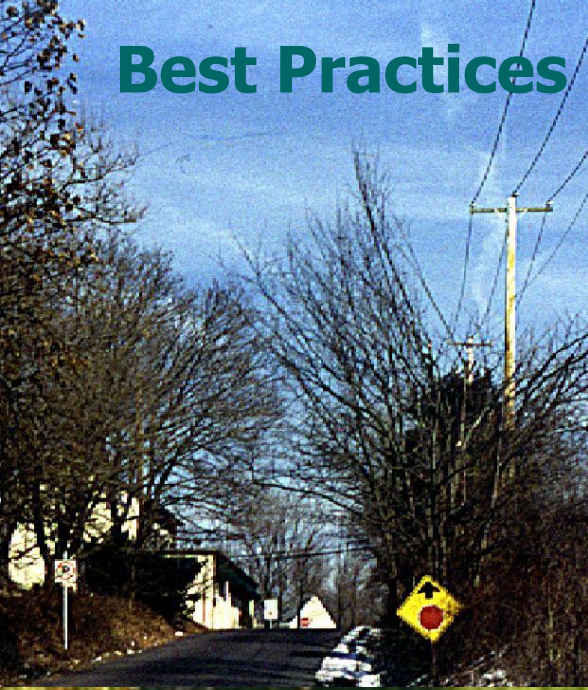
"Best" in remote/rural locations



Where would you use this machine?

Best Practices

2020 WMP: WSD-SDGE-DR 2 Q65



Common ground?



Common Ground

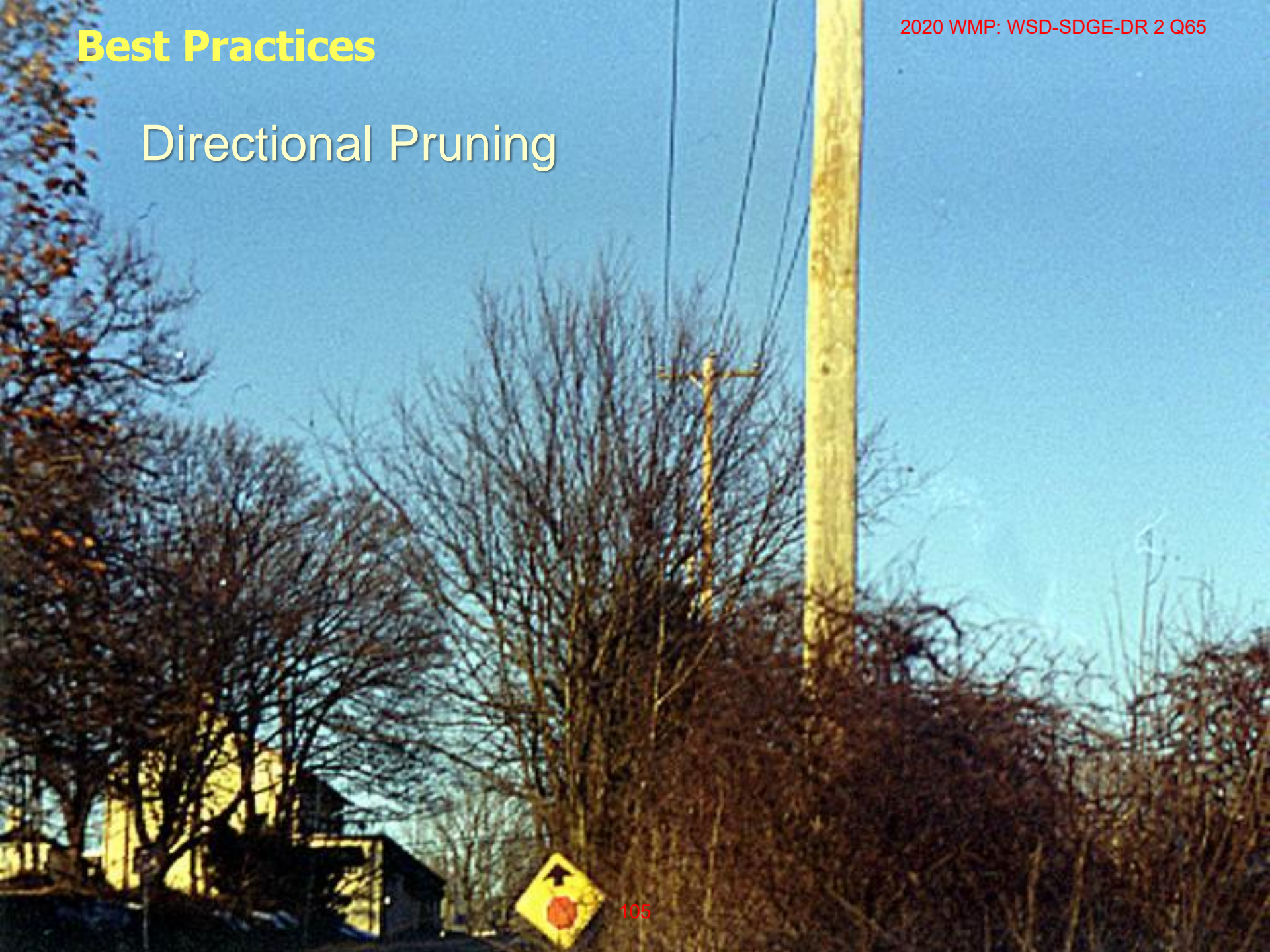
We can agree that

- Some practices are highly effective
- Some practices are destructive and should be avoided
- What is the “Best” practice often depends on the circumstances

Best Practices

2020 WMP: WSD-SDGE-DR 2 Q65

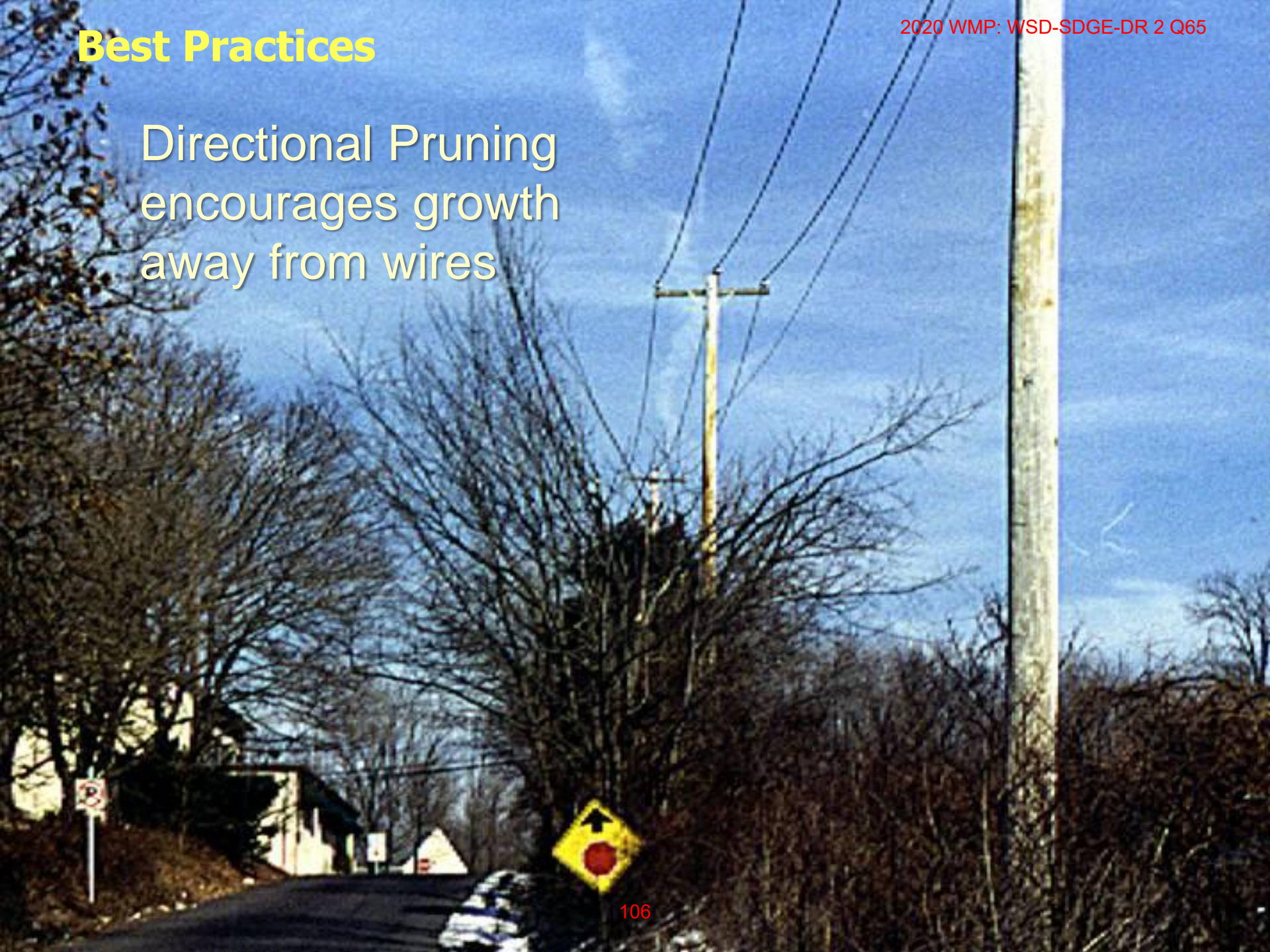
Directional Pruning



Best Practices

2020 WMP: WSD-SDGE-DR 2 Q65

Directional Pruning
encourages growth
away from wires





Pruning Method

Use Directional Pruning. Clear branches growing toward power lines. Develop good tree structure.

Not a Best Practice

2020 WMP: WSD-SDGE-DR 2 Q65



Rounding over, topping and stubbing causes damage, decay and rapid growth of sprouts – ***NOT a best practice***

Best Practices

Pollarding requires annual removal of sprouts, and can be a best practice, however it is **not** recommended under power lines.



Best Practices

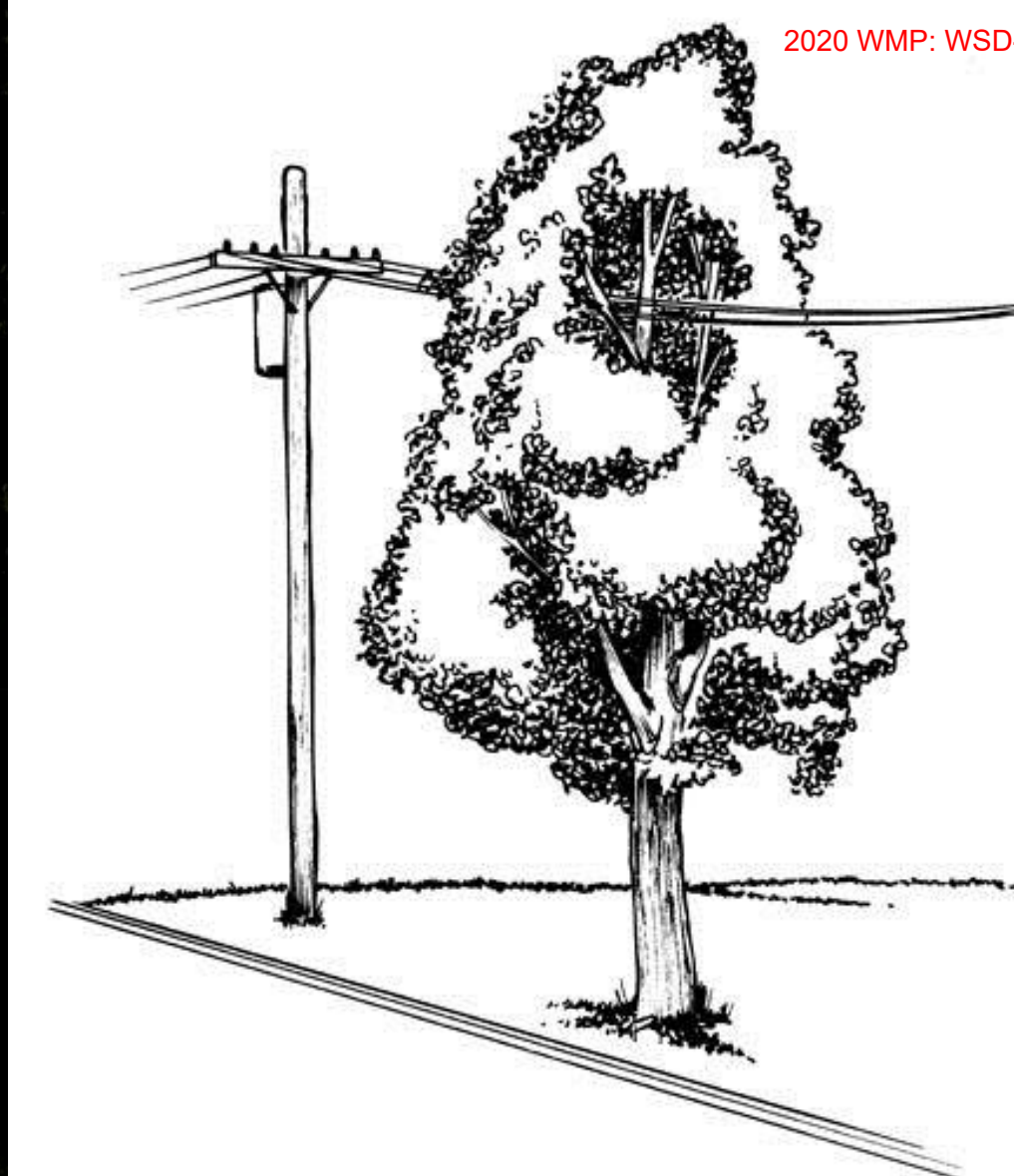
Shearing can be
a best practice



Best Practices

2020 WMP: WSD-SDGE-DR 2 Q65

Pruning on cycle



Trees not maintained on cycle grow into wires. Recovery may require extensive pruning or tree removal.

ANSI A300 "25% Rule" no longer in effect

New language:

...Remove **no more living material than what is necessary** to achieve specified objectives.

*[Your objective is to provide safe and reliable power in **high fire-risk areas**]*

Species, size, age, condition, and **site** shall be considered when specifying the location and amount of live branches to be removed.

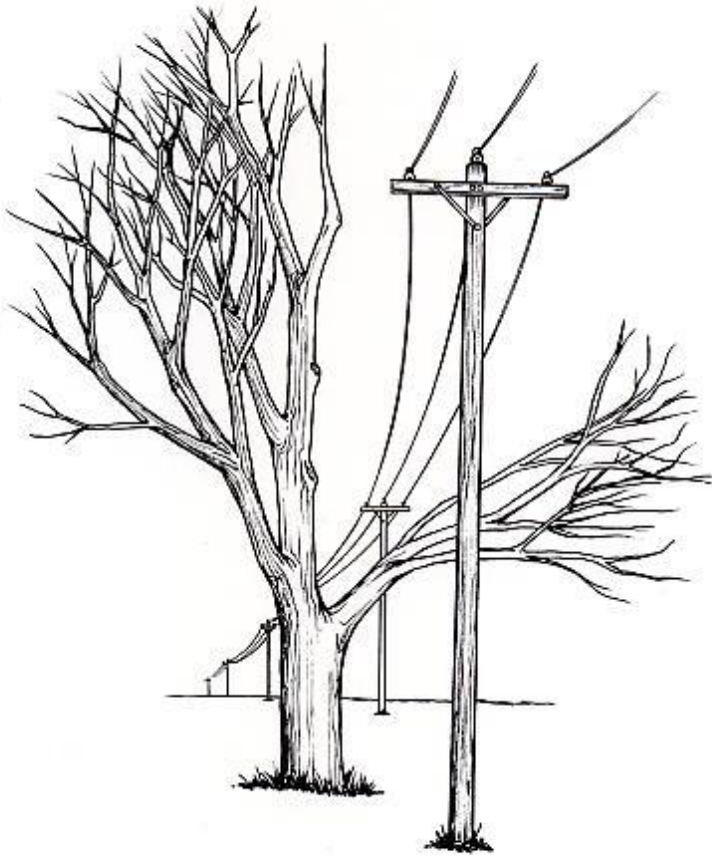
Best Practice:

If the **site** is close to primary power lines, **safety, reliability and fire prevention** are considered when determining amount to be removed.



Best Management Practices

UTILITY PRUNING OF TREES



Special companion publication to the ANSI A300 Part 1: Tree, Shrub, and Other Woody Plant Maintenance—Standard Practices, Pruning

“Best Practices”

- Are updated with the times
- Remember:
 - Best Management Practices are guidelines
 - *Every situation is different!*
 - *YOU* are the professional
 - You determine what the best practice is in any given location
- *Safe work practices are ALWAYS a best practice!*

Examples and Discussion

*Approach each tree
individually*

Roundover with regrowth



Topping causes heavy sprout growth

A300-based specification



Directional pruning reduces sprout growth

Stubs



Proper cuts back to main leads reduce regrowth



Lateral too small



Nothing
but
trouble!

Make cut here

Stub Cut



Stub Cut

- Stub will sprout and be prone to decay
- Make proper cut to lateral branch



Too many unnecessary cuts



Remove entire branches to
direct growth away from
utility facilities



Is this enough
clearance?









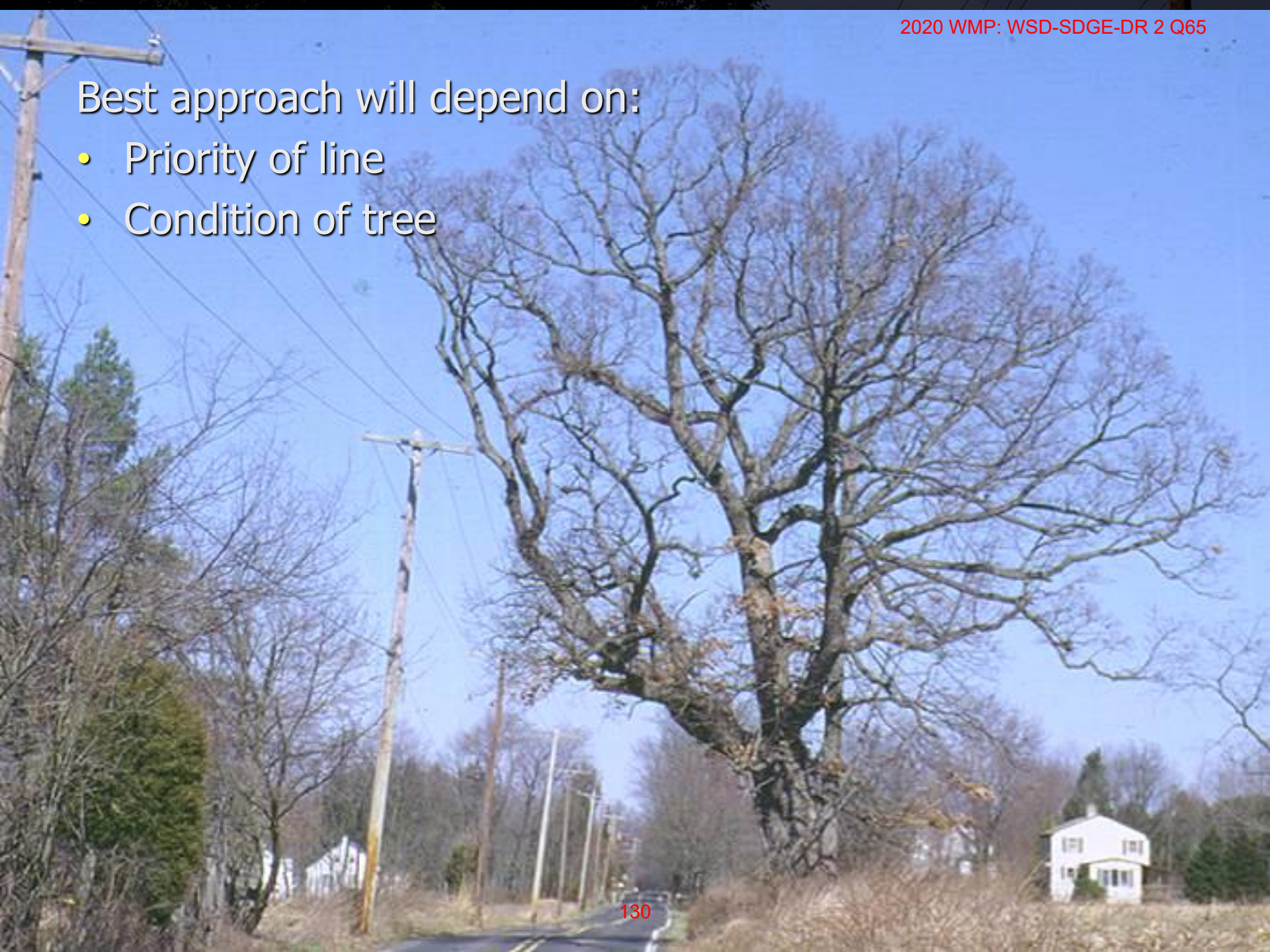


Maybe the whole tree
needs to come down...

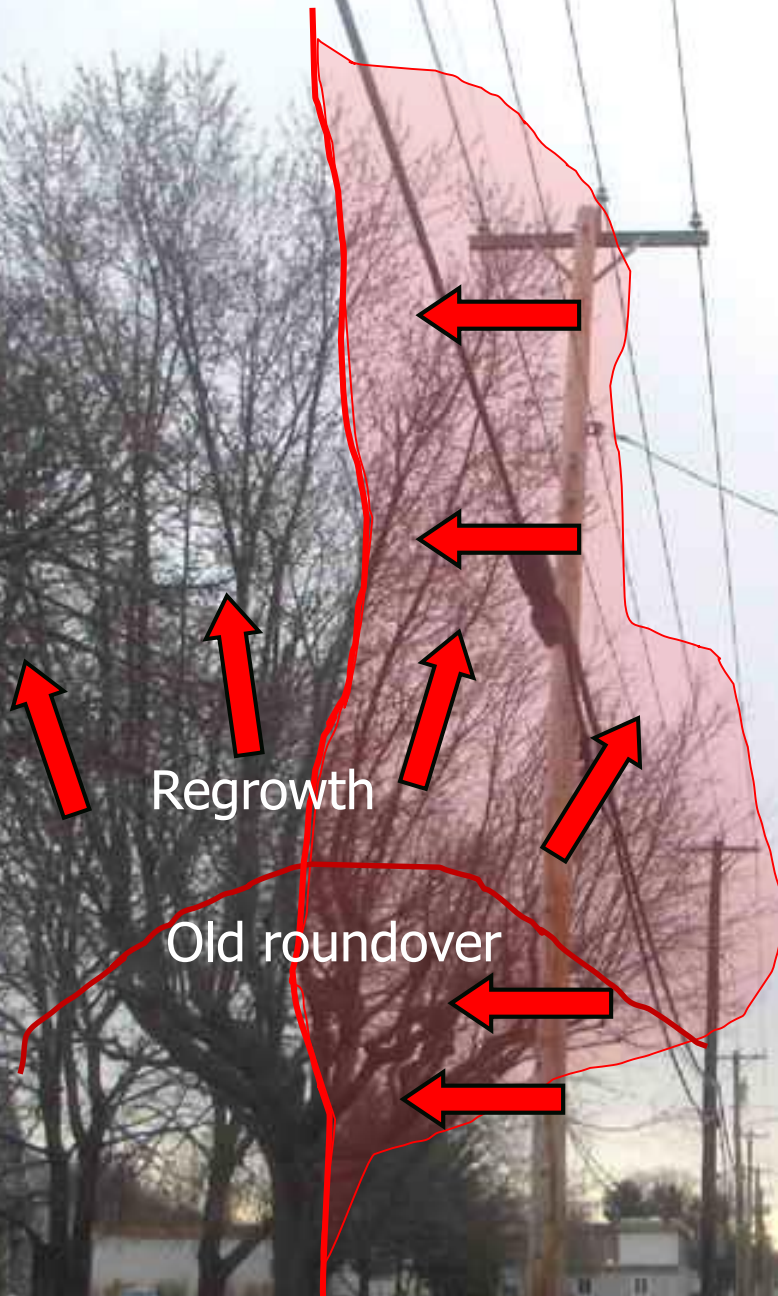


Best approach will depend on:

- Priority of line
- Condition of tree



Remove branches that threaten the utility facilities, and direct remaining growth away



Regrowth

Old roundover

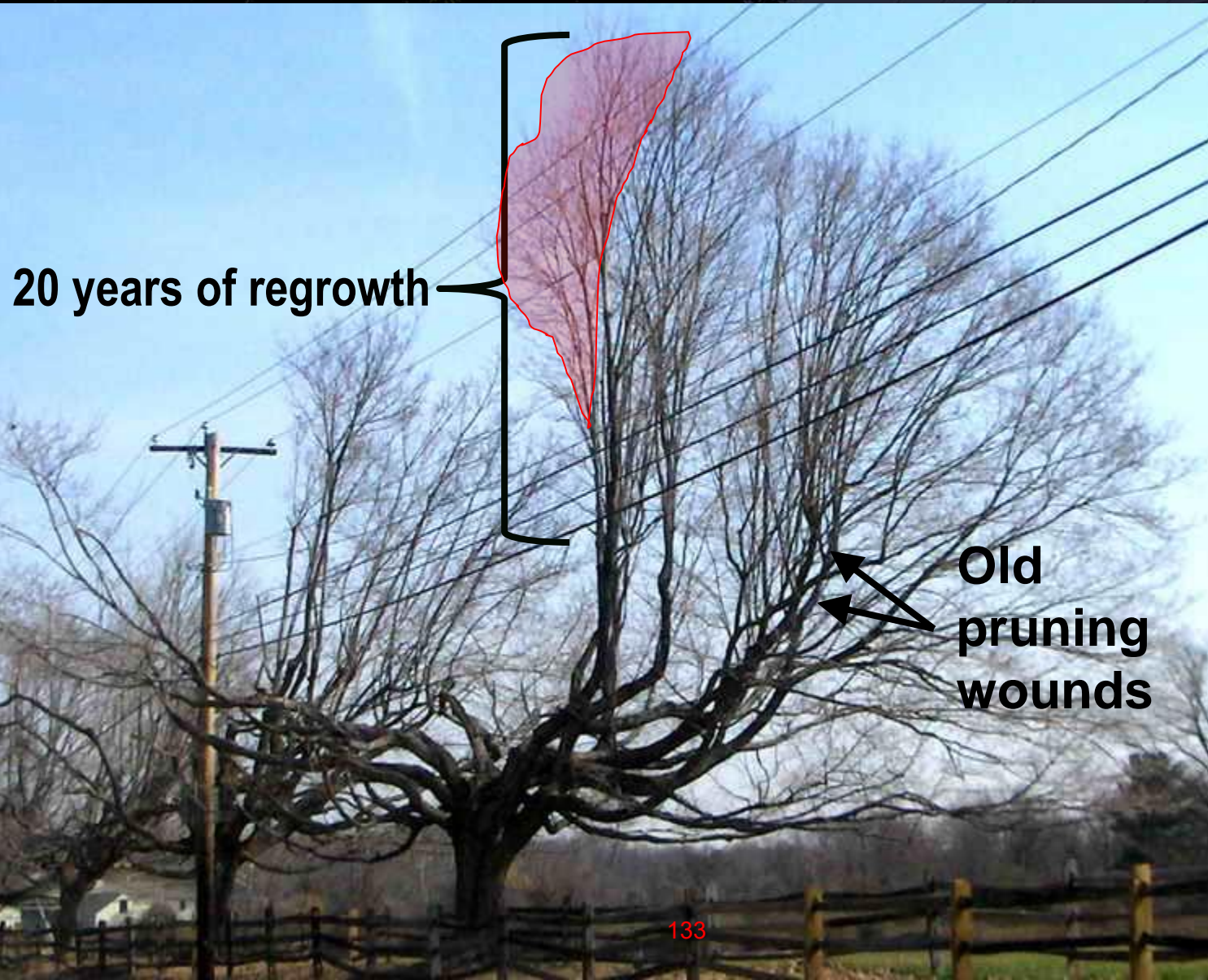
Remove branches that threaten the utility facilities, and direct remaining growth away

Option: retain and reduce shelf

Regrowth

Old roundover

Long-term effects of directional pruning

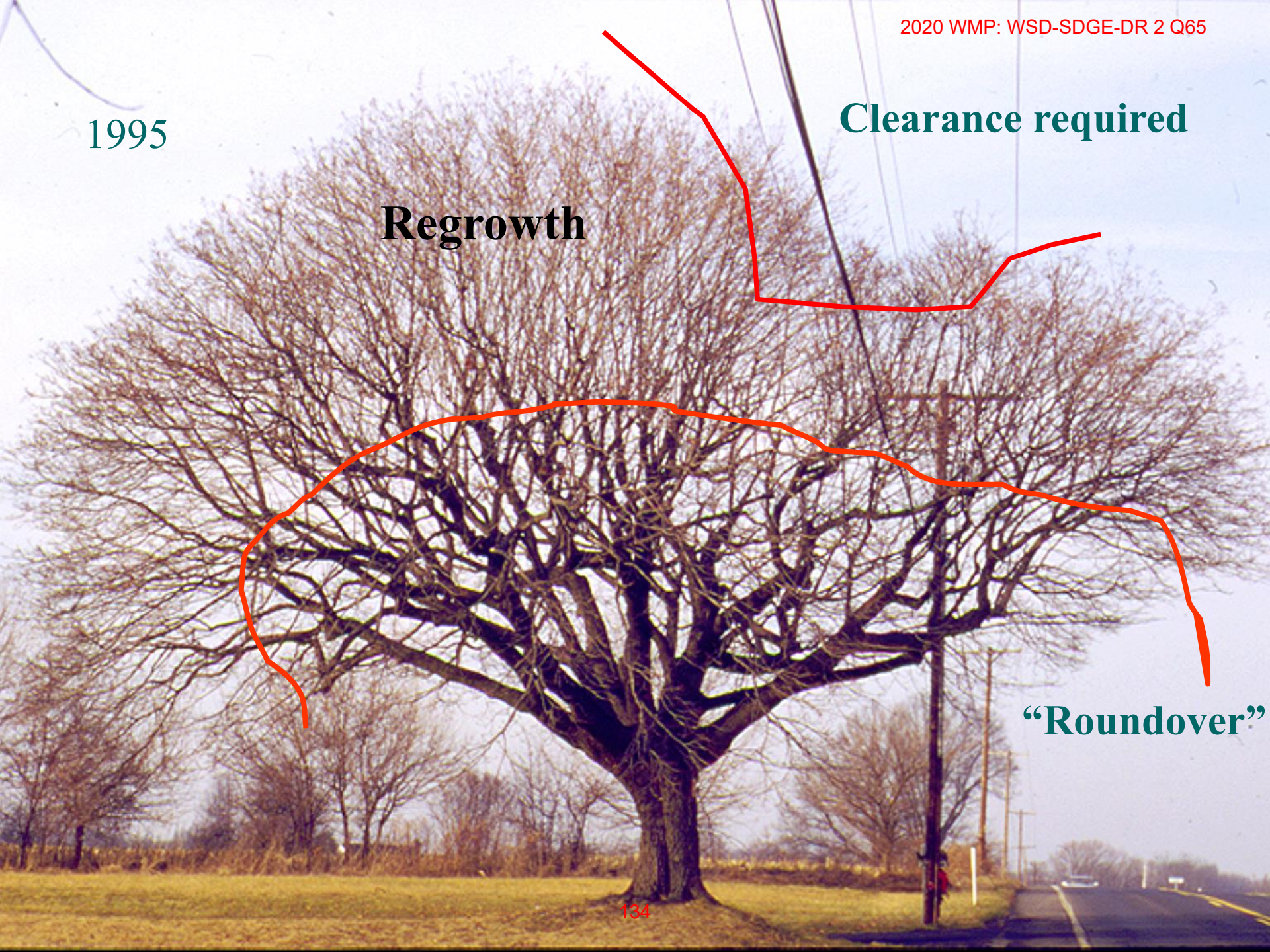


1995

Clearance required

Regrowth

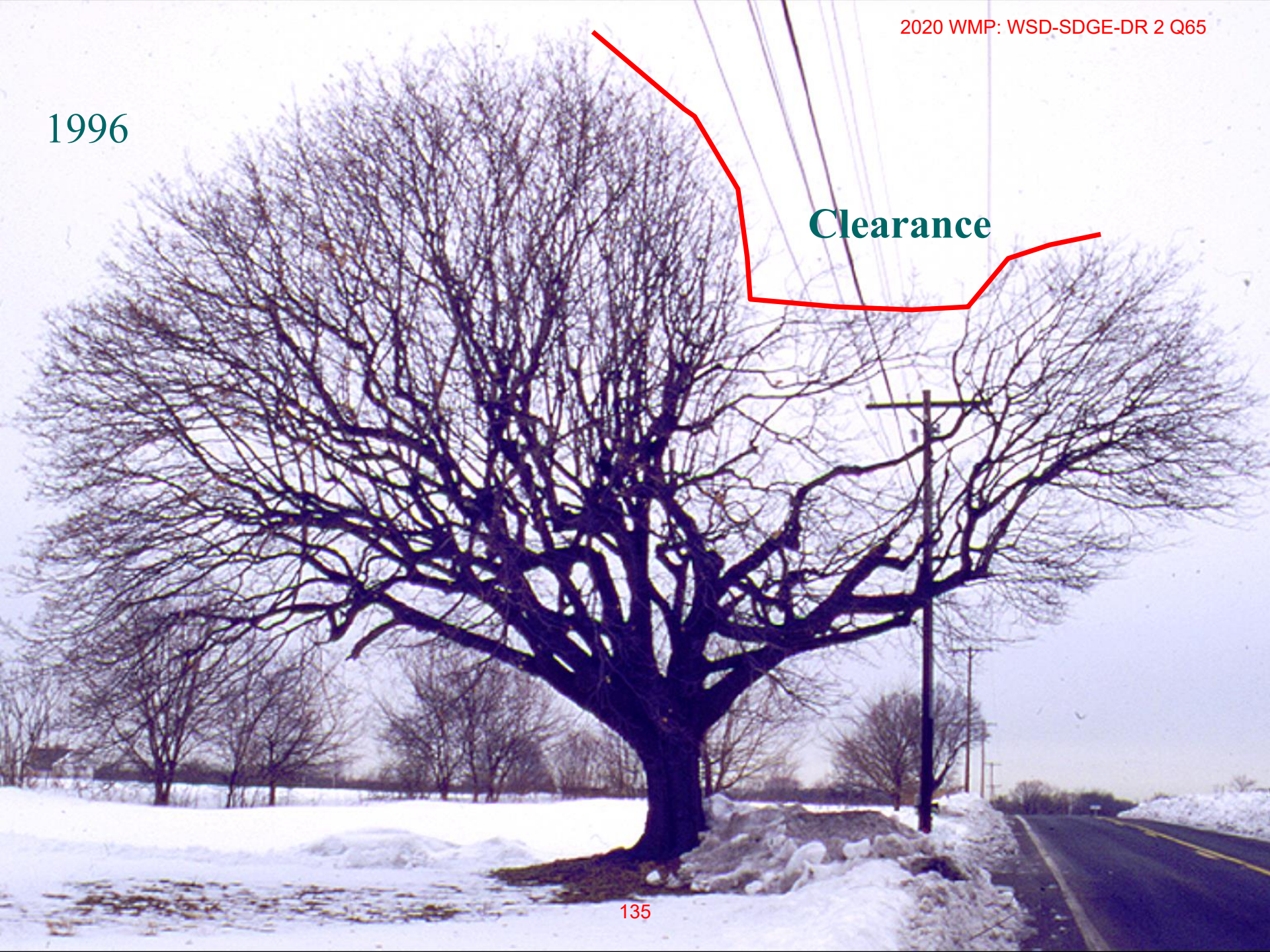
“Roundover”



1996

Clearance

135



1998



136

1999



2001



Communication
lines added using
stub cuts

2002

After 6 years, growth
is encroaching



2003





1995



2003

2020 WMP: WSD-SDGE-DR 2 Q65

2008

Increased
watersprout
growth due to
stub cuts and
more crown
removed

Cleared over
roadway



2010



2012





1995



146

2020 WMP: WSD-SDGE-DR 2 Q65

2012

Tree is
larger, older
and more
decayed





1995



1996



2020 WMP: WSD-SDGE-DR 2 Q65

2003



2012



148

1995

1996

2020 WMP: WSD-SDGE-DR 2 Q65

Trees grow and change over time

➤ Adjust accordingly



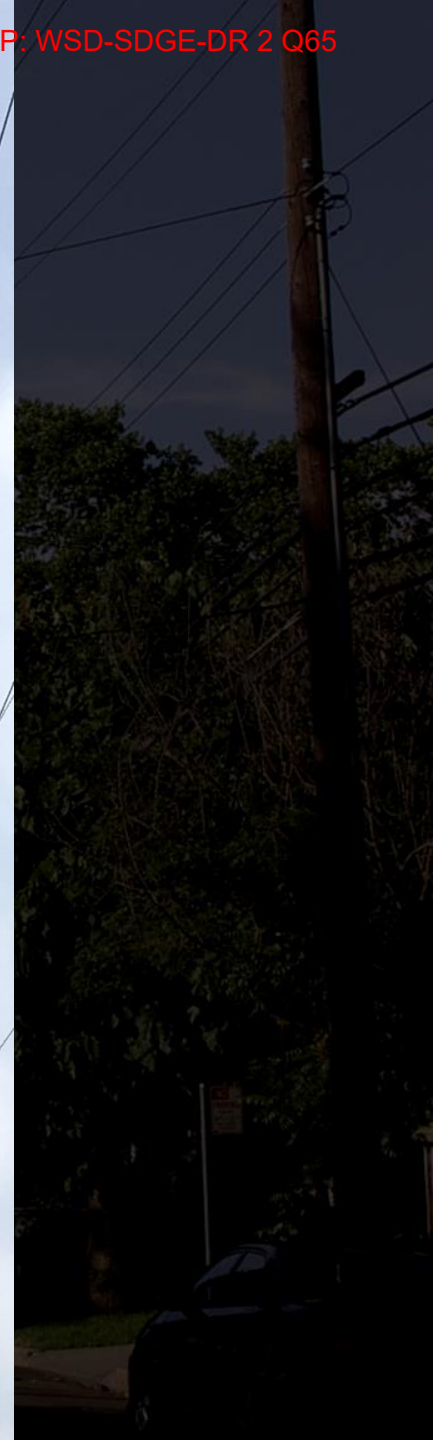












Summary

Professional Practice

- Is expected
- Improves results and reduces risk of outages and wildfire

Trees and sites vary:

- Species, size, shape
- Growth rates
- Response to pruning
- Voltage, construction, placement on circuit, exposure, etc.

Know your trees, and prune accordingly



Conclusion

- Take pride in your work
 - We provide a vital service!
- Comply with industry standards and utility specifications
- Answer customer questions
 - What we are doing and why
 - Emphasize their safety and service reliability
- Be professional
 - Know your business
 - Make good decisions
 - Set a good example
 - Work safely





Thanks!

Geoff Kempter

Technical Services

gkemp@asplundh.com

215-915-3998

